

Todd County Fiscal Court  
Soccer Complex Project

**ADDENDUM No. 2**

April 14, 2025

This ADDENDUM to plans, specifications and bidding documents for the subject project modifies the referenced items to the extent described herein. Items not modified by this ADDENDUM remain unchanged and in full effect. Bidders are required to acknowledge receipt of this ADDENDUM on the Bid Form.

1. Technical Specifications: **Replace All Earlier Versions** Refer to Section 16010-5, paragraph O, number 11 d: Average lighting level for the Soccer Field shall be 30 foot-candles and not 50 as shown.

(Attachments: None)

2. Contract Drawings: **Add** Contract Drawings revised to include Plumbing Plan sheets P-100 and P-200.

(Attachments: Construction Plans, 11 pages)

END OF ADDENDUM NO. 2 TEXT  
This ADDENDUM consists of a total of 1 page.

# CONSTRUCTION PLANS

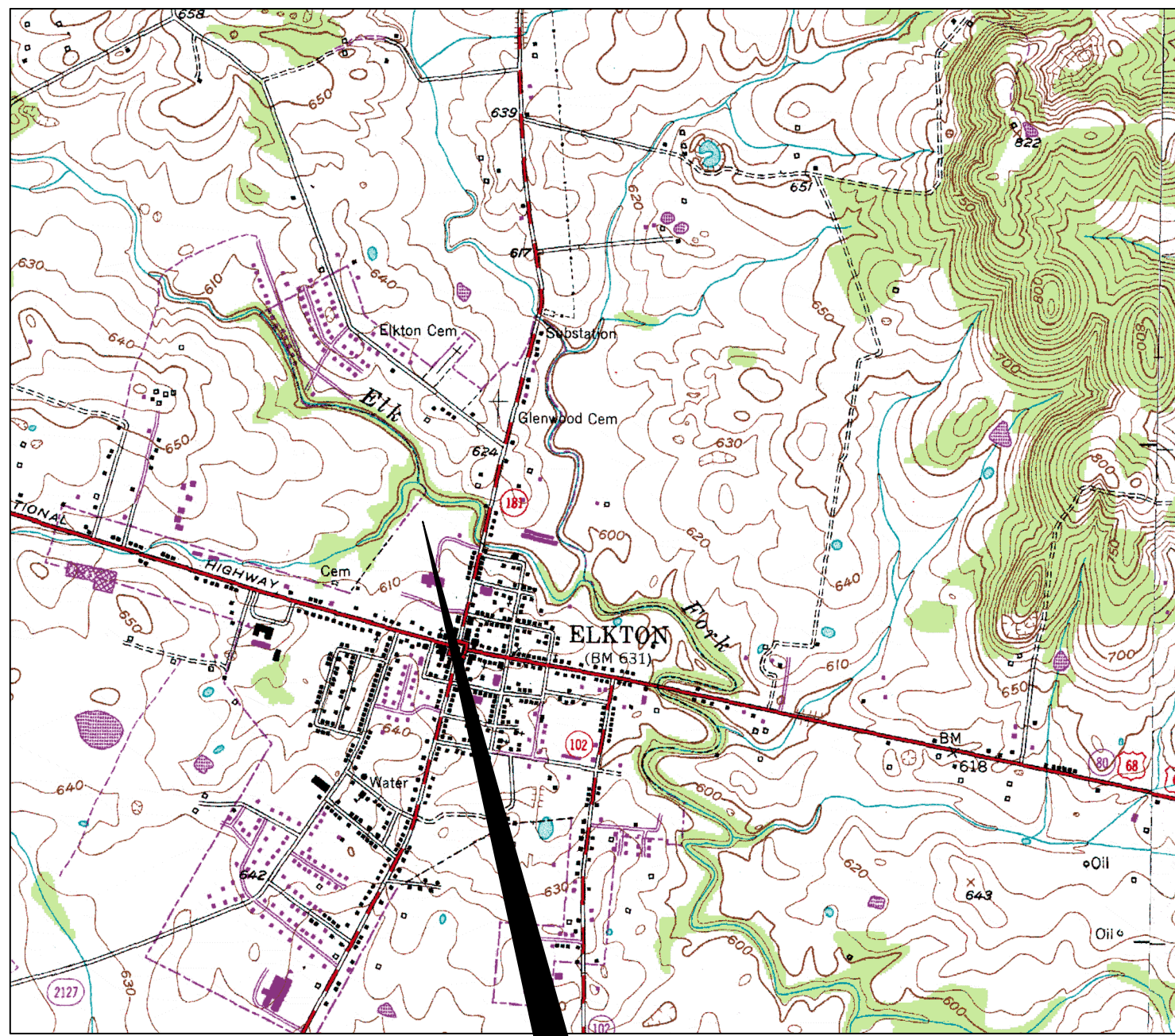
for

## TODD COUNTY SOCCER FIELD Elkton, Todd County, Kentucky

for

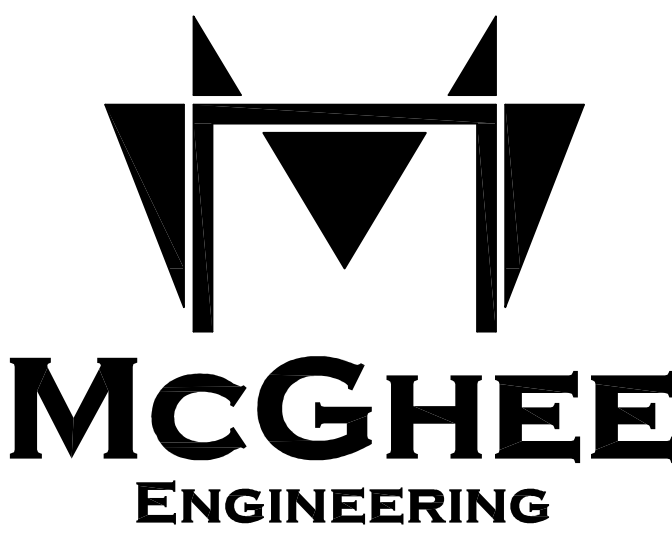
### TODD COUNTY FISCAL COURT

OWNERS



PROJECT

prepared by

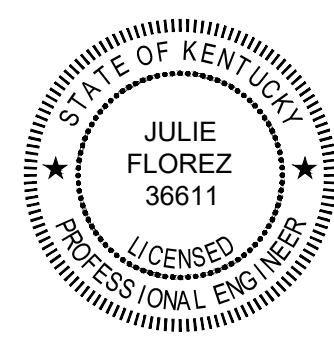
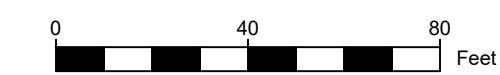


202 Ewing Street  
Guthrie, KY 42234  
(270) 483-9985

SHEET NO.	DRAWING	DESCRIPTION
CIVIL DRAWINGS		
01	C-001	EXISTING SITE CONDITIONS
02	C-100	SOCCER FIELD SITE LAYOUT
03	C-101	PROPOSED GRADING PLAN
04	C-200	PROPOSED RESTROOM PLAN
05	C-201	STANDARD DETAILS AND NOTES
ELECTRICAL DRAWINGS		
06	E-100	ELECTRICAL PLAN - RESTROOMS
07	UE-100	ELECTRICAL PLAN - SITE
08	M-100	HVAC PLAN
PLUMBING DRAWINGS		
09	P-100	PLUMBING PLAN
10	P-200	PLUMBING DETAILS

APRIL 2025






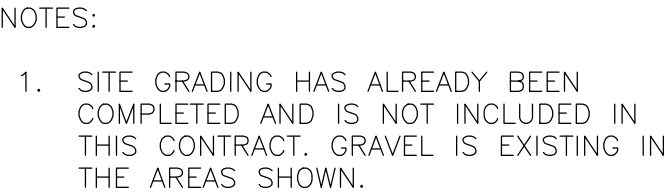
NO.	REVISIONS	DATE:
2	GRADING REVISION	04-07-25
1	JANITORIAL CLOSET REVISION	11-01-24
0	PRELIMINARY PLAN SET	07-20-23

SHEET  
C-001



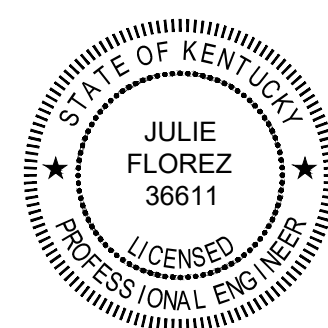






**McGHEE**  
ENGINEERING

202 S EWING STREET  
GUTHRIE, KY 42234  
(270) 483-9985



FIRM: MCGHEE ENGINEERING  
DES BY: JEF CHK BY: MWM  
DWN BY: JEF

NO.	REVISIONS	DATE:
2	GRADING REVISION	04-07-25
1	JANITORIAL CLOSET REVISION	11-01-24
0	PRELIMINARY PLAN SET	07-20-23

TODD COUNTY FISCAL COURT  
SOCCER FIELD  
ELKTON, KY

**CIVIL DRAWINGS**  
**PROPOSED GRADING PLAN**

SHEET  
C-101



FLOOR PLAN  
SCALE:  $\frac{1}{4}"=1'-0"$

FOUNDATION PLAN  
SCALE:  $\frac{3}{16}"=1'-0"$

ELECTRICAL & PLUMBING  
SCALE:  $\frac{3}{16}"=1'-0"$

CROSS-SECTION  
SCALE:  $\frac{1}{4}"=1'-0"$

[BACK](#)

LEFT SIDE

RIGHT SIDE

FRONT

## ELEVATIONS

### GENERAL NOTES

1. ALL CONSTRUCTION SHALL CONFORM TO LOCAL AND STATE BUILDING CODES.
2. ALL WORK SHALL COMPLY WITH AMERICANS WITH DISABILITIES ACT.
3. OBTAIN ALL REQUIRED PERMITS FOR THIS CONSTRUCTION.
4. CONCRETE SHALL HAVE A 28-DAY COMPRESSIVE STRENGTH OF 3,500 PSI.
5. REINFORCING STEEL SHALL BE ASTM A615 - GRADE 60.
6. ROOF SHALL BE STANDING SEAM TYPE WITH FULLY CAULKED FASTENERS APPLIED UNDER SELF-ADHERING MEMBRANE.
7. ROOFING SHALL BE 24 GAUGE GALVANIZED STEEL WITH KYNAR 500 COATING WITH MATCHING FLASHINGS AND TRIM. COLOR TO BE SELECTED FROM STANDARD COLOR OPTIONS BY THE OWNER.
8. THE BUILDING SHALL BE FURNISHED WITH GUTTERS AND DOWNSPOUTS FABRICATED FROM THE SAME MATERIAL AS THE ROOFING. PROVIDE PRECAST CONCRETE SPLASH PADS AT EACH DOWNSPOUT.

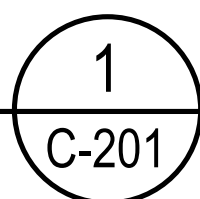
8. **DOORS SHALL BE 18GA HOLLOW STEEL SUITABLE FOR MASONRY INSTALLATION, RESTROOM DOORS SHALL HAVE 18"x24" LOUVERED VENTS IN THE BOTTOM OF THE DOORS, AND SHALL BE EQUIPPED WITH THRESHOLDS, PULLS, PUSH PLATES, AND A LOCK. STORAGE ROOM DOORS SHALL BE SOLID EQUIPPED WITH PASSAGE SET AND KEYS DEADBOLT LOCK.**
9. **WOOD TRIM SHALL BE CLEAN PAPER.**
10. **WOOD TRUSSES SHALL BE DESIGNED AND DRAWINGS STAMPED BY A LICENSED KY ENGINEER.**
11. **SECURITY DOORS SHALL BE FABRICATED FROM WELDED CARBON STEEL STOCK AND SUPPLIED WITH HINGES, BOLTS, LATCHES, AND LOCKS. LOCKS AND DOORS SHALL BE BLAST GRADED. AFTER FABRICATION, PRIMED AND COATED WITH TWO COATS OF POLYURETHANE ENAMEL PAINT.**
12. **PUMPING SHALL BE INSTALLED WITH STOP AND WASTE VALVES TO ALLOW IT TO BE FULLY DRAINED FOR FREEZE PROTECTION.**
13. **HAND SINKS SHALL BE STAINLESS STEEL WALL MOUNT TYPE, NSF APPROVED, 19"X15" WITH HOT AND COLD FAUCET AND A SUPPLY OF SOAP DISPENSER.**

14. SERVICE SINK SHALL BE 18" X 24" TO DUMPERSTEL 15"X15" TUB STAINLESS STEEL, NSF CERTIFIED.
15. TOILETS SHALL BE ADA COMPLIANT, FLOOR MOUNT STANDARD WHITE PORCELAIN, WITH MANUAL FLUSH AND SEAT AND TOILET PAPER DISPENSER.
16. URINALS SHALL BE WALL MOUNT STANDARD WHITE PORCELAIN, WASHOFF TYPE WITH MANUAL FLUSH VALVE EQUIP. TO AMERICAN STANDARD MAYBROCK.
17. MIRRORS SHALL BE 24"x36" METAL FRAMED WALL MOUNT TYPE.
18. HAND TOWEL DISPENSERS SHALL BE CENTER PULL TYPE EQUIP. TO GEORGIA PAPER.
19. GRAB BARS, TOILET PAPER DISPENSERS AND OTHER MISCELLANEOUS HARDWARE SHALL BE HEAVY-DUTY COMMERCIAL GRADE.
20. TOILET PARTITIONS SHALL BE POWDER COATED GALVANIZED STEEL WITH CONCEALED HANGERS AND BARRIER FREE LATCH.
21. WATER HEATER SHALL BE ELECTRIC, TANKLESS TYPE RATIO FOR 1 GPM AT 120°F TEMPERATURE RISE. SELF-MODULATING, LATCH BY OTHER REF#X-10.

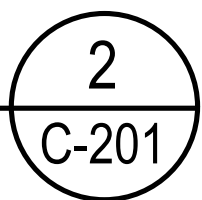
22. ACCESS PANEL AND DOOR SHALL BE 24"x24" COATED STEEL. EQUAL TO ACQUOR UV-5000 ([WWW.ACCESSDOORS.COM](http://WWW.ACCESSDOORS.COM)).
  23. VENTS SHALL BE EQUAL TO LOREN CO. CO. MODEL CB8 WITH FAN SPEED CONTROLS AND GRILLS ON INLET AND OUTLET.
  24. DRINKING FOUNTAIN SHALL BE VANDAL RESISTANT, STAINLESS STEEL, REFRIGERATED TYPE WITH INTEGRAL BOTTLE FILLER. EQUAL TO ELKAY EZH2O VCRWSK.
- FINISH SCHEDULE**
- FLOORS—TWO COATS EPOXY CONCRETE FLOOR COATING APPLIED TO DIAMOND GROUND SURFACE AT LEAST 60 DAYS AFTER CONCRETE PLACEMENT.
- INTERIOR WALLS—BLOCK FILLER AND TWO COATS EPOXY PAINT.
- CEILING—TWO COATS EPOXY PAINT.
- EXTERIOR WALLS—BLOCK FILLER AND TWO COATS ACRYLIC LATEX PAINT.
- DOORS—PRIMER AND TWO COATS POLYURETHANE ENAMEL PAINT.

NO.	REVISIONS	DATE:
2	GRADING REVISION	04-07-25
1	JANITORIAL CLOSET REVISION	11-01-24
6	PRELIMINARY PLAN SET	07-20-23





NOT TO SCALE



- ### GENERAL NOTES

- ENVIRONMENTAL NOTE:

BASEMAP &amp; SCALE NOTE

### LEGEND



EXIST. WATER MAIN

PROP. WATER MAIN

PROPERTY BOUNDARY

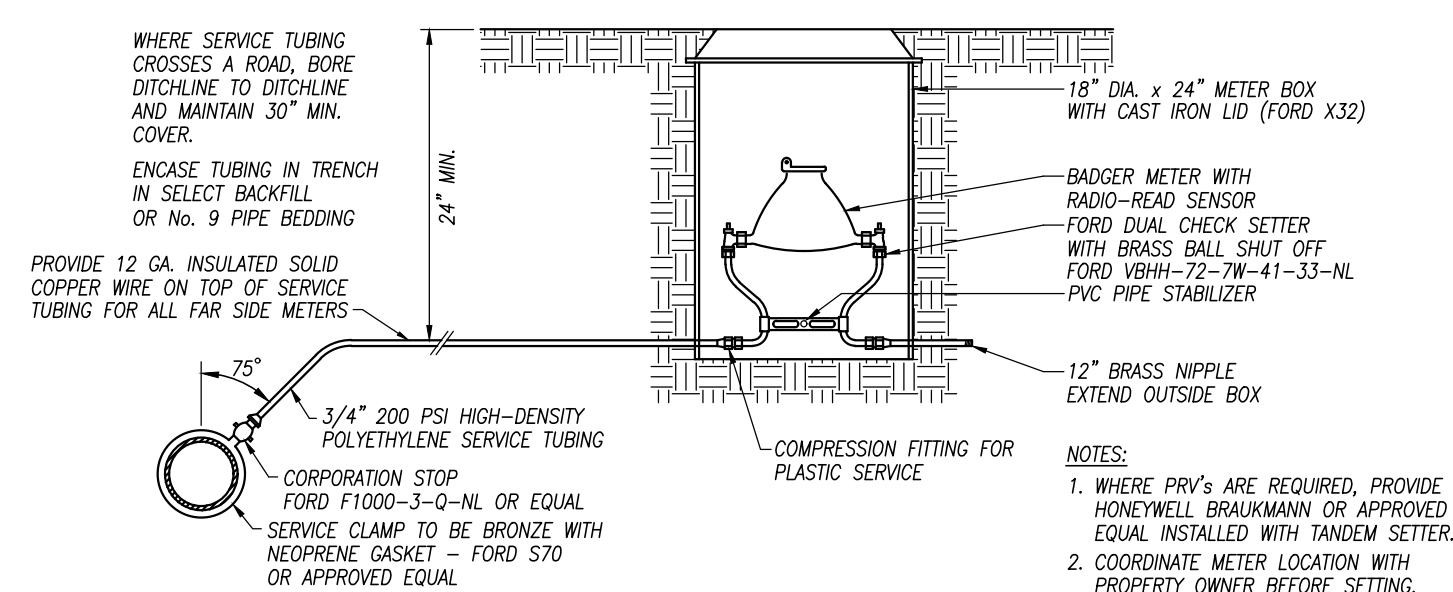
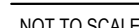
FENCE LINE

MANUAL VALVE (GATE, BFLY, ETC.)

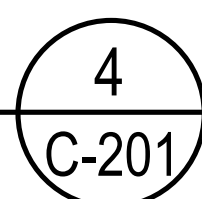
FIRE HYDRANT

POWER POLE

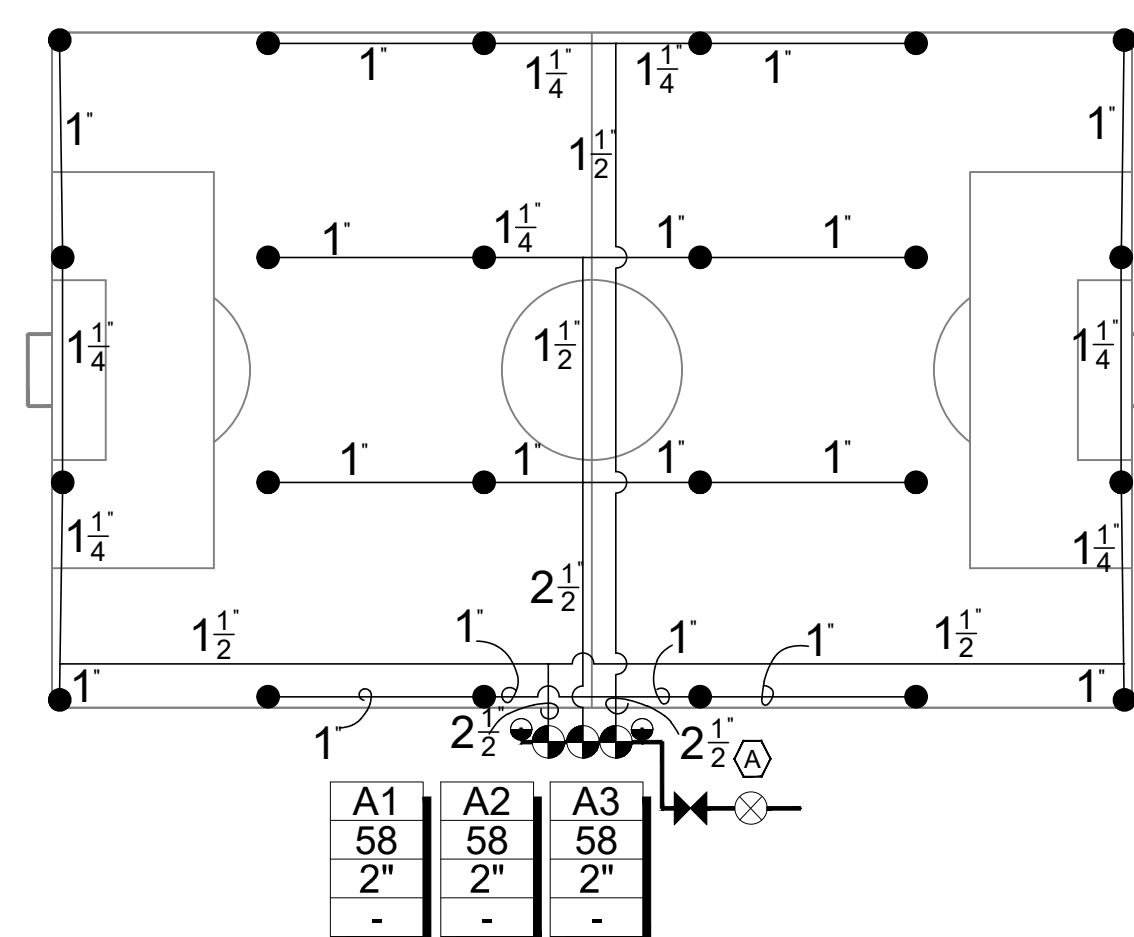
GUY WIRE



NOT TO SCALE



- NOTES:
1. WHERE PRV'S ARE REQUIRED, PROVIDE HONEYWELL BRAUKMANN OR APPROVED EQUAL INSTALLED WITH TANDEM SETTER.
  2. COORDINATE METER LOCATION WITH PROPERTY OWNER BEFORE SETTING.

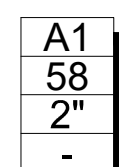


## QUANTITY

- |   |   |    |
|---|---|----|
| ▶ | BACKFLOW PREVENTION DEVICE  | 1  |
| ⊗ | MAIN SHUT-OFF VALVE   | 1  |
| ⬢ | RAIN BIRD PGA OR PEB REMOTE CONTROL VALVE<br>(SIZED AS SHOWN)                     | 3  |
| ⌚ | RAIN BIRD 5LRC QUICK COUPLING VALVE   | 2  |
| ⬢ | RAIN BIRD 5505 W/8 NOZZLE<br>PRESSURE = 50 PSI RADIUS = 49 FEET<br>FLOW = 7.3 GPM | 24 |
| Ⓐ | RAIN BIRD ESP-LX MODULAR OR ESP-MC<br>IRRIGATION CONTROLLER W/8 STATIONS          | 1  |

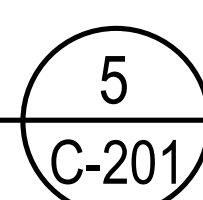
— MAINLINE PIPE: CLASS 200 PVC  
(2 1/2-INCH SIZE)

— LATERAL PIPE: CLASS 200 PVC  
(SIZED AS SHOWN)



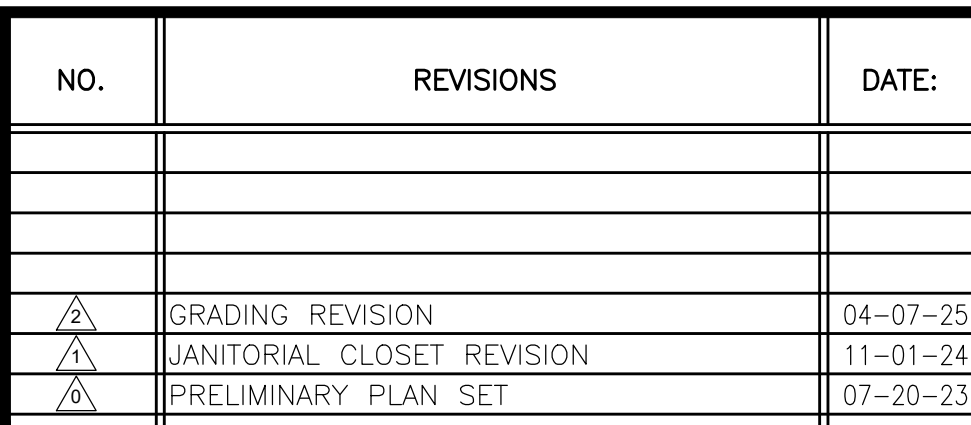
INDICATES CONTROLLER AND CONTROLLER STATION NUMBER  
INDICATES LATERAL DISCHARGE IN GPM  
INDICATES REMOTE CONTROL VALVE SIZE

NOT TO SCALE



## UTILITY CONTACTS

Ky. Underground Protection	(800) 752-6007
AT&T/Bellsouth Repair	(877) 737-2478
Pennyrile Rural Electric Coop.	(270) 265-2545
Mediacom Cable	(800) 444-5353
Atmos Energy	(270) 772-2816
City of Elkon	(270) 265-9877



# CIVIL DRAWINGS

## STANDARD DETAILS AND NOTES

SHEET  
C-201

**ELECTRICAL GENERAL NOTES**

1. ALL CONDUIT FOR PANEL FEEDERS, EQUIPMENT FEEDERS & TRANSFORMER FEEDERS SHALL HAVE INSULATED GROUNDING BUSHINGS EQUAL TO O. Z. TYPE "BL" WHERE ENTERING & / OR LEAVING ENCLOSURES, BONDING JUMPERS, SIZE AS REQ'D. BY N.E.C. (#6 AWG MIN.) SHALL BE INSTALLED FROM BUSHING TO ENCLOSURES. ALL CONDUIT TO MAIN SWITCHGEAR SHALL BE BONDED TOGETHER & TO SYSTEM GROUND.
2. ALL MOTORS 1/2 HP OR LESS SHALL BE PROTECTED BY BUSSMANN "SSU" UNIT FUSED AS REQUIRED BY N.E.C.
3. PROVIDE SEPARATE NEUTRALS FOR EACH CIRCUIT.
4. THE CONTRACTOR SHALL NOTE THAT THE DRAWINGS INDICATE ONLY THE EXTENT DIAGRAMMATICALLY OF THE WORK INTENDED TO BE PERFORMED. WORK INTENDED, HAVING MINOR DETAILS OBVIOUSLY OMITTED SHALL BE FURNISHED & INSTALLED COMPLETE TO PERFORM THE FUNCTIONS OF THE ELECTRICAL SYSTEMS AS INTENDED.
5. IT SHALL BE THE RESPONSIBILITY OF EACH CONTRACTOR TO COORDINATE W/ ALL OTHER TRADES ANY CHANGES TO THE ORIGINAL DRAWINGS OR SPECS. THIS SHALL INCLUDE No. of OR SIZE of , STARTERS, DISCONNECT SWITCHES, FUSES, BREAKERS, CONDUCTORS, & CONDUIT. IF A CONTRACTOR SUBSTITUTES A MANUFACTURE WHICH CAUSES SUCH A CHANGE, THE EXPENSE OF THOSE CHANGES SHALL BE THE RESPONSIBILITY OF THAT CONTRACTOR.
6. THE ELECTRICAL CONTR. SHALL REMOVE ANY EXISTING ELECTRICAL ITEMS, WIRING, CONDUIT, ETC. WHICH CONFLICTS w/ NEW CONSTRUCTION. ANY OF THESE ITEMS WHICH ARE TO REMAIN AS A PERMANENT PART OF THE SYSTEM SHALL BE RELOCATED &/OR RECONNECTED. INSTALL BLANK COVERS WHERE EXISTING SWITCHES, OUTLETS, LIGHT FIXTURES, ETC. ARE ABANDONED. REMOVED ITEMS SHALL BE OFFERED TO THE OWNER, w/ ANY DISCARDED ITEMS BEING REMOVED FROM JOB SITE BY THE ELECTRICAL CONTRACTOR.
7. CATALOG NUMBERS SHOWN ON DRAWINGS ARE FOR DESIGN PURPOSES TO ESTABLISH A MINIMUM ACCEPTABLE QUALITY. SEE SPECIFICATIONS FOR ADDITIONAL MANUFACTURERS WHO HAVE APPROVABLE EQUIPMENT.

**ELECTRICAL SYMBOL LEGEND**

S ..... SINGLE POLE SWITCH.  
S<sub>3</sub> ..... THREE WAY SWITCH.  
⌚ ..... DUPLEX RECEPTACLE, WALL MTD. 16" A. F. F.  
⌚<sub>GFI</sub> ..... 115 VOLT GROUND FAULT RECEPTACLE.  
⌚<sub>WP</sub> ..... DUPLEX RECEPTACLE WITH WEATHERPROOF COVER.  
⊙ ..... JUNCTION BOX WITH COVER.  
⊙ ..... MOTOR OUTLET, HORSEPOWER INDICATED ON PLAN.  
⊠ ..... FUSED DISCONNECT SWITCH, SIZED PER N.E.C.  
—|—|—| ..... CONDUIT RUN CONCEALED IN WALLS OR CLG. HATCHMARKS INDICATE No. OF # 12THHN CONDUCTORS, UNLESS NOTED.  
-|-|- ..... CONDUIT RUN IN GROUND OR FLOOR. SAME AS ABOVE.  
-|-|- ..... FLEXIBLE CONDUIT.  
A-2 ..... HOME RUN TO PANEL. ARROW INDICATES No. OF CIRCUITS, "A" INDICATES PANEL, & "2" INDICATES CIR. No.  
N.I.C. .... NOT IN CONTRACT.  
WP ..... WEATHER-PROOF, NEMA 3R  
E.C. .... EMPTY CONDUIT WITH PULL CORD OR CABLE.  
A.F.F. .... ABOVE FINISHED FLOOR.

**ELECTRICAL IDENTIFICATION DETAIL**

**SAMPLE ONLY**

**PANEL "AR"**

120/208 V 4 WIRE 3 PHASE  
FED BY D.P.B.#1, BRK'R. #2

PHASE A - BLACK  
PHASE B - RED  
PHASE C - BLUE  
NEUTRAL - WHITE

1. ALL PANELS, SWITCHGEAR, TRANSFORMERS, DISCONNECTS, CABINETS, & OTHER LARGE ELEC. EQUIP. SHALL BE LABELED PER DETAIL. USE LAMACOID PLATES W/ BLACK BACKGROUND & WHITE LETTERS. CENTER ABOVE THE CABINET DOOR w/ ALUMINUM SCREWS.
2. MARK ROOF MTD. EXHAUST FANS, ROOF TOP UNITS, & OTHER SIMILAR EQUIP. w/ ALUM. TAPE, USING DYNO-MITE HAND EMBOSSING TOOL. FASTEN w/ ALUMINUM SHEET METAL SCREWS.
3. SHOW PROPER ELECTRICAL INFORMATION ON ALL EQUIPMENT.
4. PANEL INDEXES SHALL BE TYPED & SHALL INDICATE EQUIPMENT SERVED & LOCATION.

**WIRING DEVICE GROUNDING DETAIL**

WIRING DEVICE

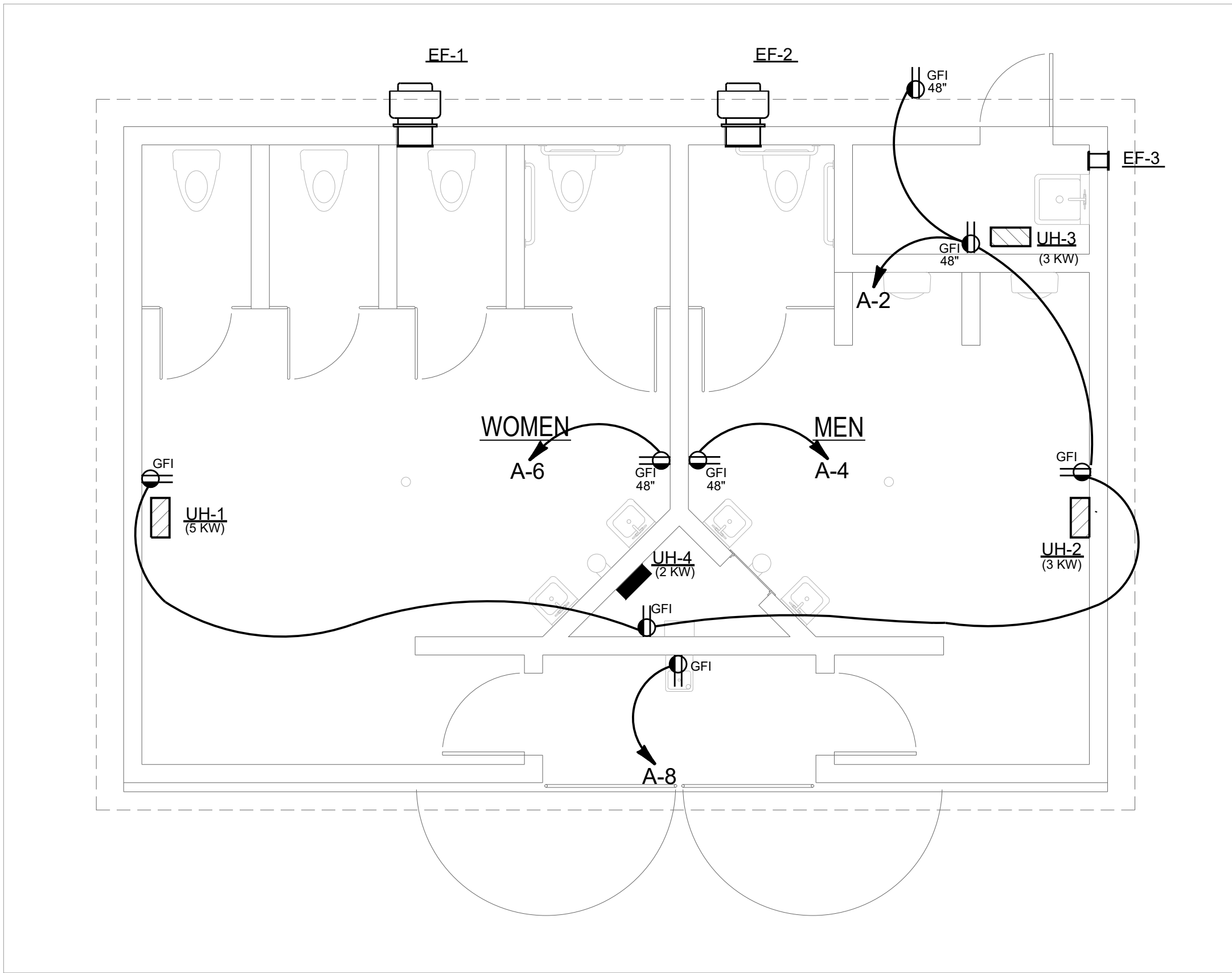
OUTLET BOX

GROUND

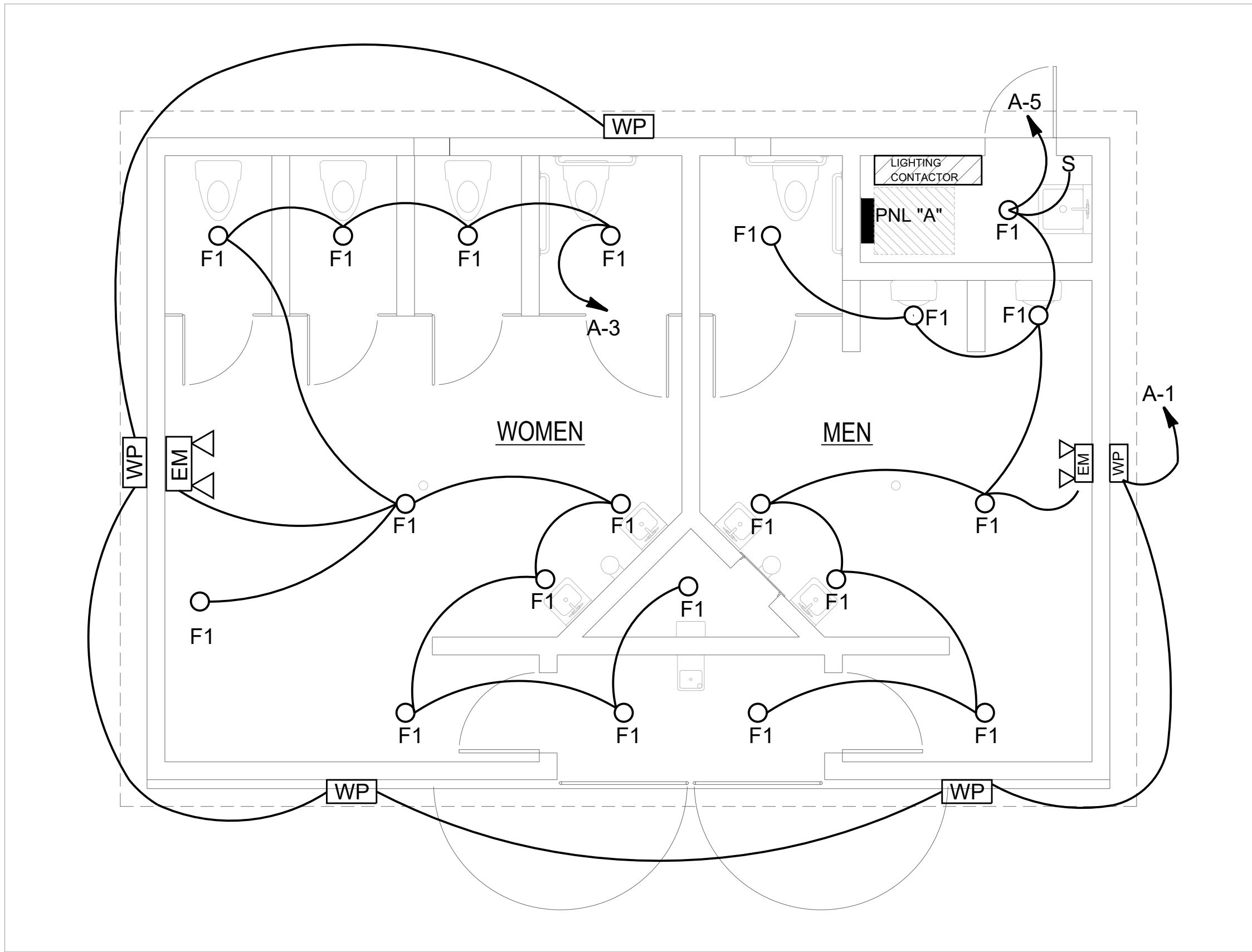
WIRE NUT

CONDUIT

THREE WIRE w/ GROUNDING CONDUCTOR



**2 EQUIPMENT FLOOR PLAN**  
1/4" = 1'-0"



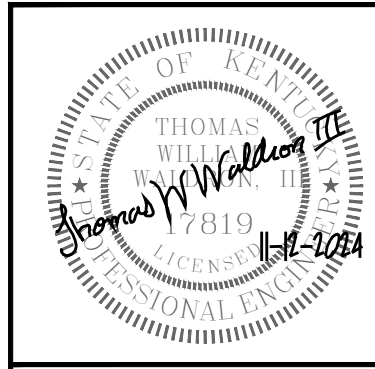
**1 LIGHTING FLOOR PLAN**  
1/4" = 1'-0"

LIGHTING FIXTURE SCHEDULE					
Type	Wattage / Lamp	Manufacturer	Catalog Number	Mounting	Description
F1	31W / LED	HALO	HLB8LS9FSE010MWVR	SURFACE	DOWNLIGHT 90 CRI; 2352 LUMENS; LUMEN SELECTABLE
EM	1.1W / LED	SURE-LITES	SEL25	SURFACE	EMERGENCY - 25 FT. COVERAGEE -108 LUMENS
WP	20.7W / LED	LUMARK	AXCS2A	MOUNTED	EXTERIOR WALLPACK - 2561 LUMENS

HVAC ELECTRICAL SCHEDULE					
MARK	F.L.A.	VOLT / PHASE	WIRE / CONDUIT	DISC. / FUSE	BREAKER / CIRCUIT
UH-1	20.8	240/1	2 #10, #10 G., 3/4" C.	30A /2P F30	A-23,25
UH-2	12.5	240/1	2 #12, #12 G. 3/4" C.	30A /2P F20	A-27,29
UH-3	12.5	240/1	2 #12, #12 G. 3/4" C.	30A /2P F20	A-31,33
UH-4	8.3	240/1	2 #12, #12 G. 3/4" C.	30A /2P F20	A-35,37
EF-1	1.5	120/1	1 #12, #12 G. 3/4" C.	30A /2P F20	CONNECT TO LIGHTING CKT. A-3
EF-2	1.5	120/1	1 #12, #12 G. 3/4" C.	30A /2P F20	CONNECT TO LIGHTING CKT. A-5
EF-3	0.5	120/1	1 #12, #12 G. 3/4" C.	30A /2P F20	CONNECT TO LIGHTING CKT. A-5

PANEL "A" LOCATION RESTROOM BLDG.											
120/240 VOLT 1 Ø 3 W				TYPE NEMA 1							
225 AMP				MAIN BRK'R.		SERVICE ENTRANCE RATED					
No	LOAD	TRIP AMP	W O. C.	WATTAGE Aφ	WATTAGE Bφ	W O. C.	TRIP AMP	LOAD			
1	EXT. LTS.	20A	1P	105	1000		1P	20A	5 RCPT.		2
3	WOMEN LTS.	20A	1P		350	200	1P	20A	MEN OUTLET		4
5	MEN LTS.	20A	1P	290	200		1P	20A	WOMEN OUTLET		6
7	SPARE	20A	1P		-	800	1P	20A	DRINKING FOUNTAIN		8
9	SPARE	20A	1P	-	-		1P	20A	SPARE		10
11	SOCCER FIELD	30A	2P		2460	2460	2P	30A	SOCCER FIELD		12
13	POLE 1	-	-	2460	2460		-	-	POLE 3		14
15	SOCCER FIELD	30A	2P		2460	2460	2P	30A	SOCCER FIELD		16
17	POLE 2	-	-	2460	2460		-	-	POLE 4		18
19	WATER HTR.	30A	2P		2250	-	1P	20A	SPARE		20
21	4500 WATTS	-	-	2250	-		1P	20A	SPARE		22
23	UNIT HTR. #1	30A	2P		2500	-	1P	20A	SPARE		24
25	5KW 230 VAC	--	--	2500	-		1P	20A	SPARE		26
27	UNIT HTR. #2	20A	2P		1500	-	1P	20A	SPARE		28
29	3KW 230 VAC	--	--	1500	-		1P	20A	SPARE		30
31	UNIT HTR. #3	20A	2P		1500	-	1P	20A	SPARE		32
33	3 KW 230 VAC	--	--	1500	-		1P	20A	SPARE		34
35	UNIT HTR. #4	20A	2P		1000	-	1P	20A	SPARE		36
37	2KW 230 VAC	---	---	1000	-		1P	20A	SPARE		38
39	SPARE	20A	2P		-	729	2P	20A	PARKING LOT LIGHTING		40
41	---	---	---	-	729		---	---	---		42
WATT TOTALS :				13,960	6,849	14,020	6,649	WATTAGE F.L.A.			
TOTAL WATTS PER PHASE :				20,809	-	20,669	=	41,478	:	173	

3 - #4 /0, #6 GRD., 4 INCH CONDUIT TO PAD MTD. TRANSFORMER. CONDUIT SHALL BE BURIED 24" TO TOP. PROVIDE NON-FERROUS DETECTABLE WARNING TAPE IN TRENCH 12" BELOW GRADE. PROVIDE CONDUIT WITH GALVANIZED SWEEPING 90's (24" RADIUS). CONDUIT ABOVE GRADE SHALL BE IMC OR RGS.



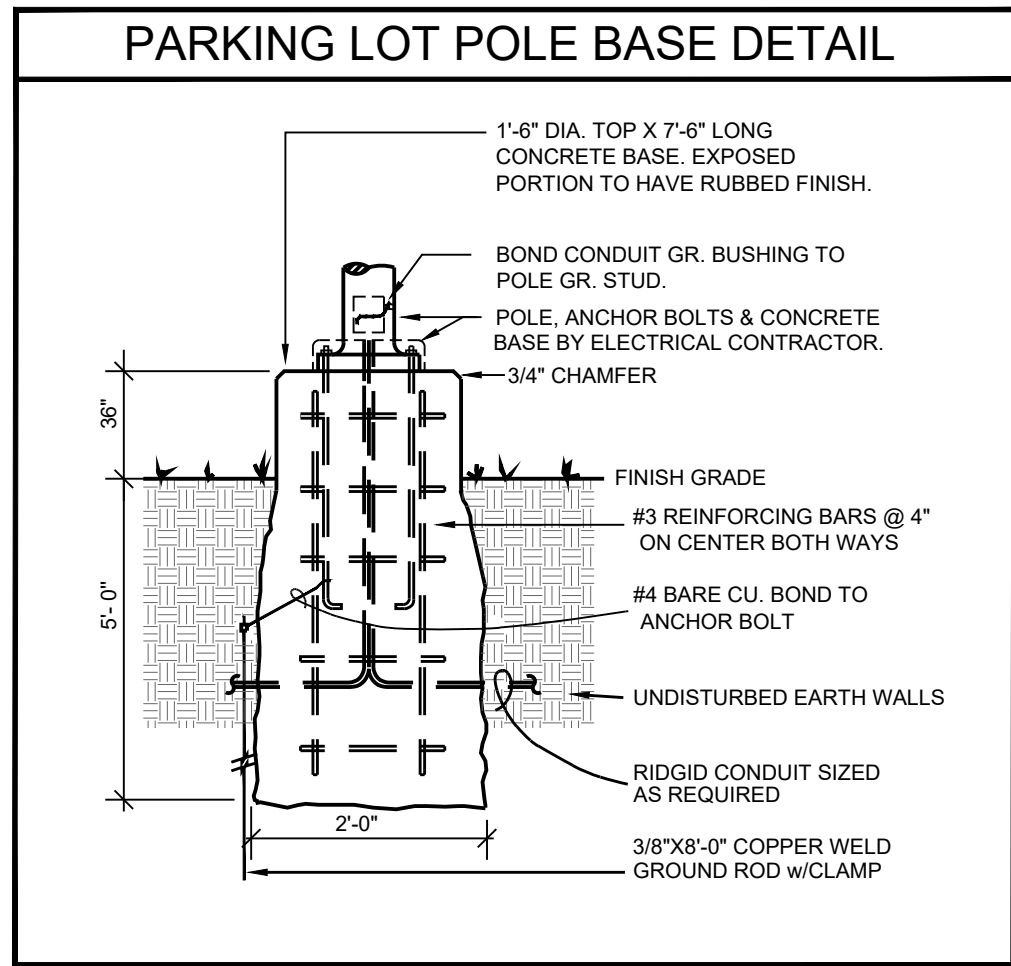
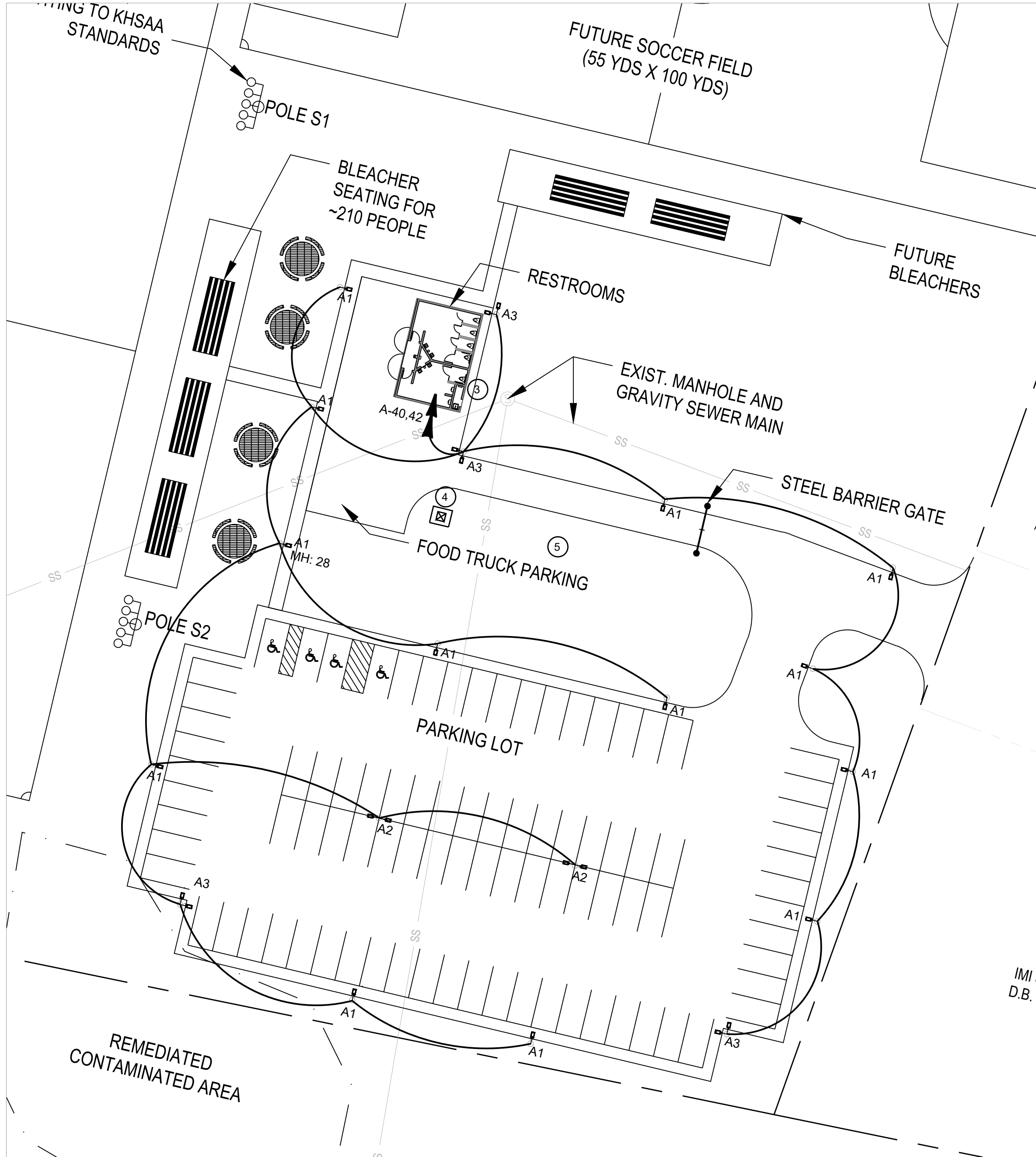
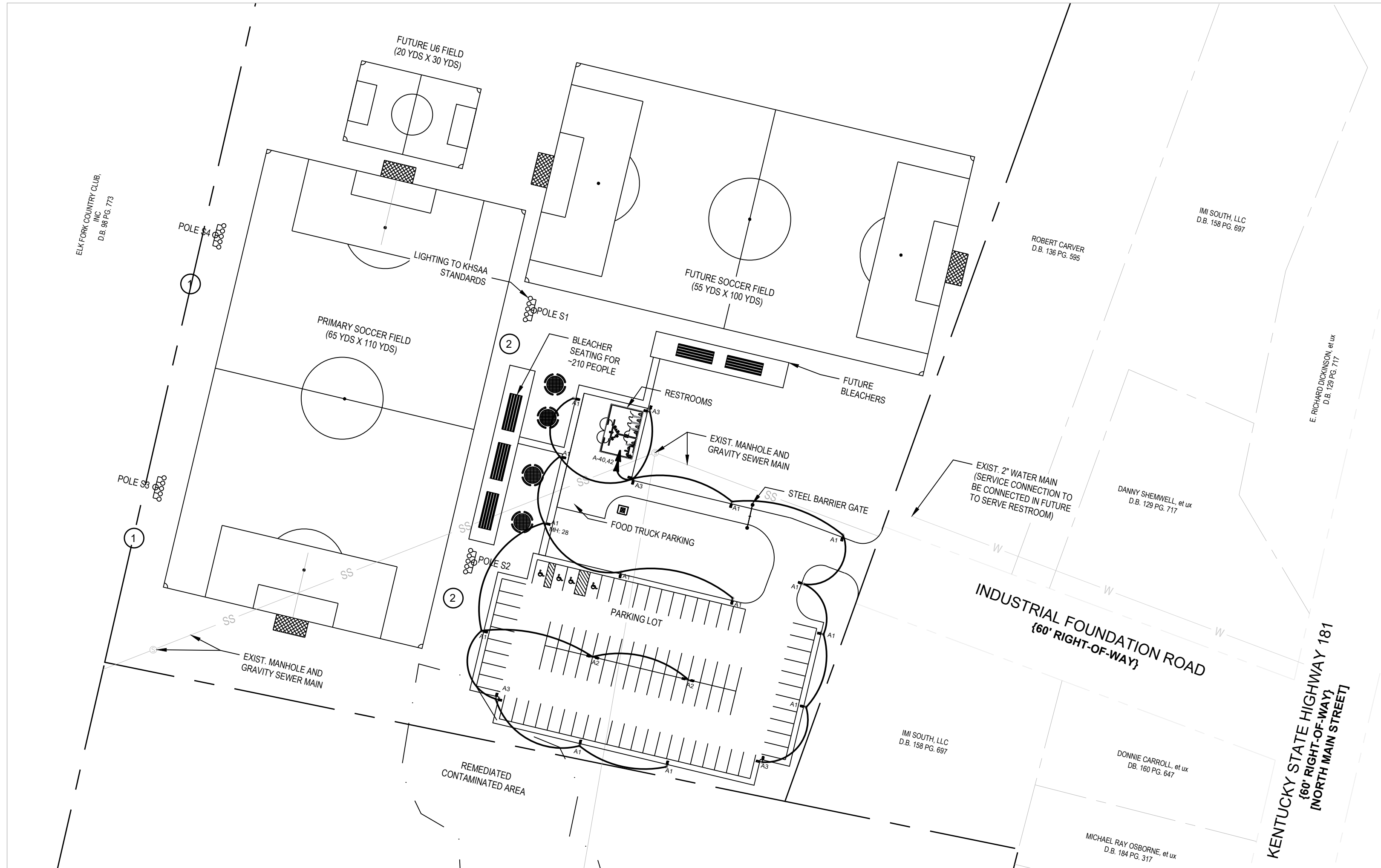
**ELECTRICAL PLAN - RESTROOMS**

**WBW**Engineering, Inc.  
3000 Canton Street, Hopkinsville, KY 42240  
Phone: 270-886-2536 Fax: 270-885-7978 mail@wbwengr.com

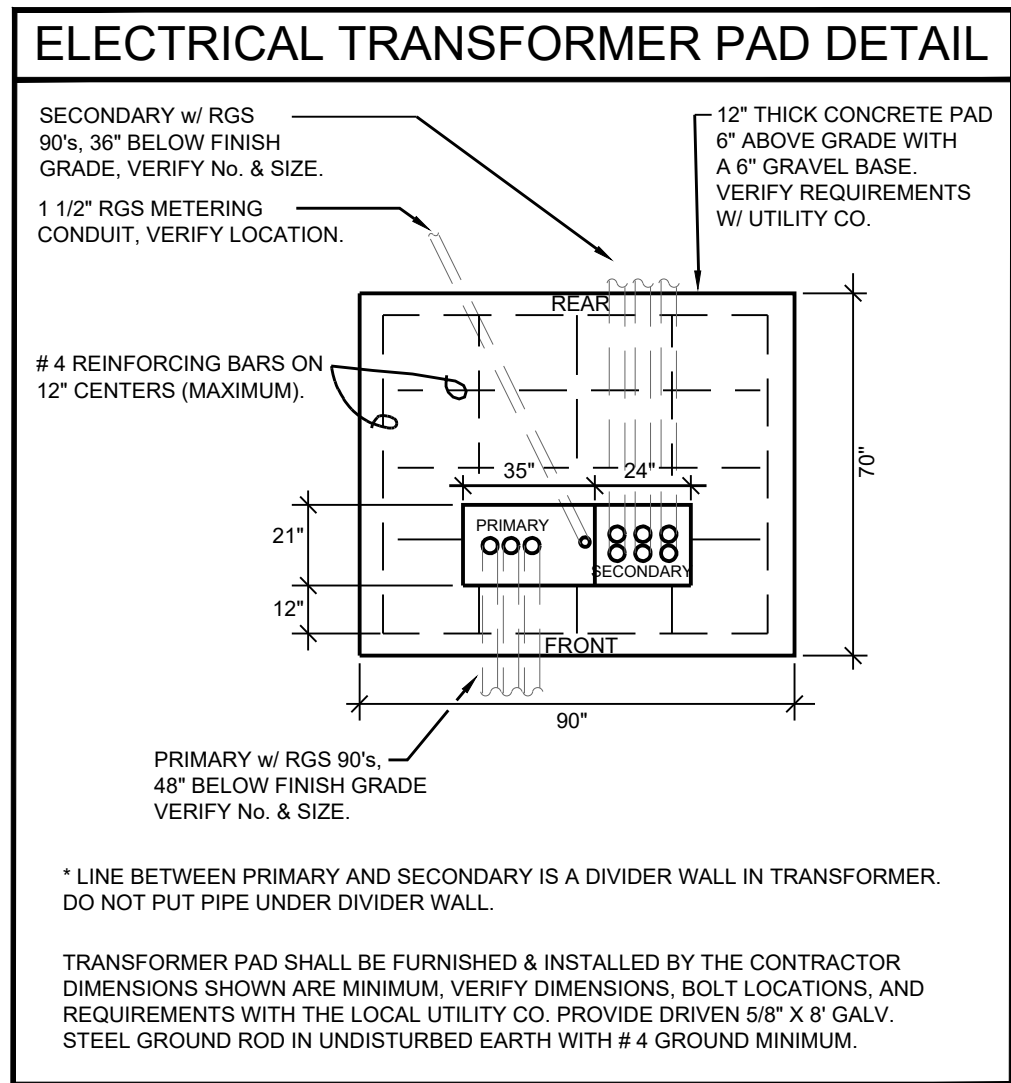
TODD CO. SOCCER FIELD  
RESTROOM BUILDING & LIGHTING  
N MAIN ST., ELKTON, KY 42220

CONSULTANT: Drawn by: GC Checked by: TW Scale: 1/4" = 1'-0" Date: 11-12-2024 Revised: --- Sheet: **E100**





1 OVERALL SITE ELECTRIC PLAN  
SCALE: 1" = 60'



ELECTRICAL GENERAL NOTES

CONTRACTOR SHALL PROVIDE POLE BASE DESIGN FOR SOCCER FIELD LIGHTING. DESIGN SHALL BE PROVIDED AND STAMPED BY AN ENGINEER LICENSED IN KENTUCKY.

CONTRACTOR SHALL PROVIDE COMPLETE ELECTRICAL SECONDARY FROM ELECTRICAL PANEL LOCATED IN RESTROOM BUILDING TO PAD MOUNTED TRANSFORMER PROVIDED BY PENNYRILE ELECTRIC. REFER TO DRAWING E101 FOR LOCATION OF THE ELECTRICAL PANEL.

CONTRACTOR SHALL COORDINATE LOCATION OF UNDERGROUND ELECTRICAL CONDUITS WITH OTHER BURIED UTILITIES. BURIED ELECTRICAL CONDUCTORS SHALL BE ENCLOSED IN CONDUIT.

CONTRACTOR SHALL PROVIDE COMPLETE LIGHTING SYSTEM FOR SOCCER FIELD. AVERAGE FOOTCANDLE LEVEL MEASURED ON 3 FT SPACING SHALL AVERAGE 30 FOOTCANDLES. POLE LOCATIONS INDICATED ON THIS DRAWING ARE THE DESIRED LOCATIONS TO PREVENT POLES FROM BEING LOCATED TOO CLOSE TO THE ADJACENT SOCCER FIELD.

CONTRACTOR CABINET FOR ATHLETIC FIELD LIGHTING IS INTENDED TO BE INSTALLED INSIDE THE RESTROOM BUILDING. 36 INCH CLEARANCE REQUIRED IN FRONT OF CABINETS.

CONTRACTOR SHALL COORDINATE LOCATION OF TRANSFORMER AND METERING WITH MCGHEE ENGINEERING, WBW ENGINEERING AND PENNYRILE ELECTRIC.

ELECTRICAL KEYED NOTES

1 PROVIDE 240 VAC SINGLE PHASE POWER TO SOCCER FIELD LIGHTING POLES - 2 #3, #6 GRD., 1 1/2 INCH CONDUIT AT 24 INCHES DEEP.

2 PROVIDE 240 VAC SINGLE PHASE POWER TO SOCCER FIELD LIGHTING POLES - 2 #6, #6 GRD., 1 1/2 INCH CONDUIT AT 24 INCHES DEEP..

3 PROVIDE 240 VAC SINGLE PHASE POWER TO ELECTRICAL PANEL "A" FROM PENNYRILE ELECTRIC PAD - MOUNTED TRANSFORMER - 3 #4/0, #3 GRD., 4 INCH CONDUIT 24 INCHES DEEP. REFER TO SHEET E-100 FOR PANEL LOCATION.

4 TRANSFORMER PAD PROVIDED BY CONTRACTOR PER PENNYRILE ELECTRIC (PRECC) REQUIREMENTS. CONSTRUCTION CHARGES BY PRECC SHALL BE INCLUDED IN BID.

5 CONTRACTOR SHALL EXTEND EXISTING 3 INCH PRIMARY CONDUIT TO TRANSFORMER. PROVIDE 3 INCH CONDUIT 48 INCHES DEEP WITH GALVANIZED 90'S HAVING 24 INCH SWEEP. CONTRACTOR TO VERIFY LOCATION OF EXISTING PRIMARY CONDUIT PRIOR TO BID.

NOTE: PROVIDE NEMA3R DISCONNECT WHERE LOCATED OUTSIDE THE BUILDING.

LIGHTING FIXTURE SCHEDULE - SITE LIGHTING					
Type	Wattage / Lamp	Manufacturer	Catalog Number	Mounting	Description
A1	54W / L.E.D.	COOPER	PRV-PA1A-750-U-T4W	25 FT. POLE KW INDUSTRIES # SSP25-4-7-BRZ-DM10-BC	SINGLE
A2	108W / L.E.D.	COOPER	PRV-PA1A-750-U-T4W	25 FT. POLE KW INDUSTRIES # SSP25-4-7-BRZ-DM10-BC	QTY 2 FIXTURES @ 180 DEGREES
A3	108W / L.E.D.	COOPER	PRV-PA1A-750-U-T4W	25 FT. POLE KW INDUSTRIES # SSP25-4-7-BRZ-DM10-BC	QTY 2 FIXTURES @ 90 DEGREES

CONSULTANT:

### ELECTRICAL PLAN - SITE

**WBW Engineering, Inc.**  
3000 Canton Street, Hopkinsville, KY 42240  
Phone: 270-886-2536 Fax: 270-885-7978 mail@wbwengr.com

TODD CO. SOCCER FIELD  
RESTROOM BUILDING & LIGHTING  
N MAIN ST., ELKTON, KY 42220

Drawn by: GC	Checked by: TW	Scale: 1" = 60'-0"	Date: 12-19-24	Revised: ---	Sheet: <b>UE100</b>
-----------------	-------------------	-----------------------	-------------------	-----------------	------------------------



HVAC GENERAL NOTES:

- CONTRACTOR SHALL FIELD VERIFY AND COORDINATE ALL MECHANICAL DUCT ROUTING, PIPING, ETC. WITH EXACT LOCATIONS OF STRUCTURAL COMPONENTS, LIGHTING, SUPPORTS, ARCHITECTURAL COMPONENTS, ETC.
- CONTRACTOR SHALL COORDINATE MECHANICAL WORK WITH OTHER TRADES. CONTRACTOR SHALL PERFORM WORK IN STRICT ACCORDANCE PER LOCAL, INTERNATIONAL, OR OTHER GOVERNING CODES.
- CONTRACTOR SHALL COMBINE AND SIZE CONDENSATE DRAINS AS NECESSARY PER IMC 2015 AND THE LATEST EDITION OF ASHRAE DESIGN GUIDELINES. PROVIDE CONDENSATE PUMPS WITH ASSOCIATED POWER WHERE NECESSARY. ROUTE INDOOR UNIT CONDENSATE DRAINS AS SHOWN ON CONTRACT DOCUMENTS.
- CONTRACTOR SHALL COORDINATE WITH OTHER TRADES ANY CHANGE OF EQUIPMENT DEVIATING FROM THE PROVIDED SCHEDULES IN THE CONTRACT DOCUMENTS.
- PROVIDE ACCESS PANELS IN DRYWALL/PLASTER CEILINGS FOR MAINTENANCE OF EQUIPMENT LOCATED ABOVE CEILING. REFER TO MANUFACTURER'S EQUIPMENT ACCESS TO LOCATE PANELS.
- CONTRACTOR SHALL AVOID ROUTING DUCTWORK OVER LIGHTING FIXTURES WHERE SPACE IS LIMITED ABOVE CEILING.
- CONTRACTOR SHALL MOUNT THERMOSTATS 48" A.F.F. OR EVEN WITH LIGHT SWITCH MOUNTING HEIGHT.
- PROVIDE THERMOSTATS LOCATED IN COMMON AREAS WITH PROTECTIVE LOCKABLE PLASTIC THERMOSTAT COVERS. COVERS SHALL BE VENTED AND SHALL NOT EXCEED MORE THAN 2" AROUND THERMOSTAT SIZE.
- CONTROL WIRING SERVING WALL MOUNTED THERMOSTATS, Co2 SENSORS, ETC. SHALL BE CONCEALED IN WALLS.
- EQUIPMENT CURBS SHALL BE SLOPED AS REQUIRED TO MATCH ROOF PITCH. REFER TO ARCHITECTURAL DRAWINGS.
- PROVIDE TURNING VANES IN ALL 90° RECTANGULAR DUCTWORK BENDS.
- THE CONTRACTOR SHALL BE RESPONSIBLE FOR THE COMPLETE AND PROPER INSTALLATION OF THERMOSTATS AND ALL OTHER NECESSARY FIELD MOUNTED CONTROL COMPONENTS. THE HVAC EQUIPMENT MANUFACTURER SHALL FURNISH COMPLETE WIRING DIAGRAMS TO THE INSTALLER FOR USE IN WIRING CONTROLS. ALL CONTROL WIRING SHALL BE INSTALLED IN STRICT ACCORDANCE W/ THE N.E.C. (NATIONAL ELECTRIC CODE).
- CONTRACTOR SHALL PROVIDE SMOKE DAMPERS AT ANY LOCATION WHERE DUCTWORK PENETRATES A SMOKE WALL. REFER TO ELECTRICAL DRAWINGS FOR POWER AND FIRE ALARM CONNECTION DETAILS.
- CONTRACTOR SHALL PROVIDE FIRE DAMPERS PER LOCAL AND GOVERNING CODES, AT ANY LOCATION WHERE DUCTWORK PENETRATES A FIRE RATED ASSEMBLY OR WALL TO MAINTAIN THAT ASSEMBLY'S FIRE RATING. REFER TO ARCH. DRAWINGS FOR FIRE RATINGS.
- SLEEVE ALL DUCTWORK AND HVAC PIPING PENETRATIONS. PROVIDE FIRE CAULK AT RATED WALLS FOR PIPING PENETRATIONS.
- CONTRACTOR SHALL FLASH AND SEAL ALL ROOF AND WALL PENETRATIONS.
- SEAL ALL TRANSVERSE DUCT JOINTS WITH AN APPROVED DUCT SEALER TO INSURE THAT THE SUM OF DIFFUSER OUTLETS/INLETS ARE WITHIN 10% OF THE DESIGN AIRFLOW.
- PROVIDE FLEXIBLE CONNECTION BETWEEN HVAC UNITS AND SHEET METAL DUCTWORK.
- ROUTE HVAC DUCTWORK AND PIPING INSTALLED ABOVE CEILING AS HIGH AS POSSIBLE.
- PROVIDE 1" MIN. OR SAME SIZE AS UNIT CONNECTION CONDENSATE DRAIN FROM EACH UNIT TRAPPED TO MAINTAIN A WATER SEAL 1" GREATER THAN THE FAN TOTAL STATIC PRESSURE.
- ALL PIPE AND DUCT SUPPORTS AND RESTRAINTS SHALL BE DESIGNED FOR SEISMIC CATEGORY FOR BUILDING LOCATION PER GOVERNING CODE REQUIREMENTS. SIZE AND INSTALL SUPPORTS AND RESTRAINTS IN ACCORDANCE WITH ASHRAE SEISMIC DESIGN GUIDELINES.
- MAINTAIN MANUFACTURER'S RECOMMENDED CLEARANCES ON ALL EQUIPMENT.
- DUCTWORK, PIPING, ETC. SHALL NOT BE ROUTED OVER TOP OF ELECTRICAL PANEL BOARDS.
- FAN COIL UNITS, VENT FANS, PACKAGED UNITS, ETC. SHALL BE INSTALLED IN SUCH A MANNER THAT ALL FILTERS, VALVES, MOTORS, PANELS ETC. ARE COMPLETELY ACCESSIBLE AND SERVICEABLE. PROVIDE ELECTRICAL SERVICE CLEARANCES IN ACCORDANCE WITH THE LATEST EDITION OF THE N.E.C.
- INSTALL ALL EQUIPMENT AS PER MANUFACTURER'S RECOMMENDATIONS UNLESS NOTED OTHERWISE.
- THESE PLANS ARE SCHEMATIC IN NATURE AND INDICATES THE APPROXIMATE AND GENERAL LOCATION OF DUCTWORK, EQUIPMENT, AND PIPING.
- EXHAUST AND FLUE TERMINATIONS SHALL MAINTAIN A 15' MINIMUM DISTANCE FROM FRESH AIR INTAKES AND BUILDING OPENINGS.
- CONTRACTOR SHALL PROVIDE NECESSARY DUCTWORK FITTINGS, BENDS, ETC. TO ROUTE DUCTWORK BETWEEN STRUCTURAL MEMBERS WHERE SPACE IS LIMITED ABOVE CEILING.
- DUCT DIMENSIONS SHOWN ARE INSIDE CLEAR DIMENSIONS.

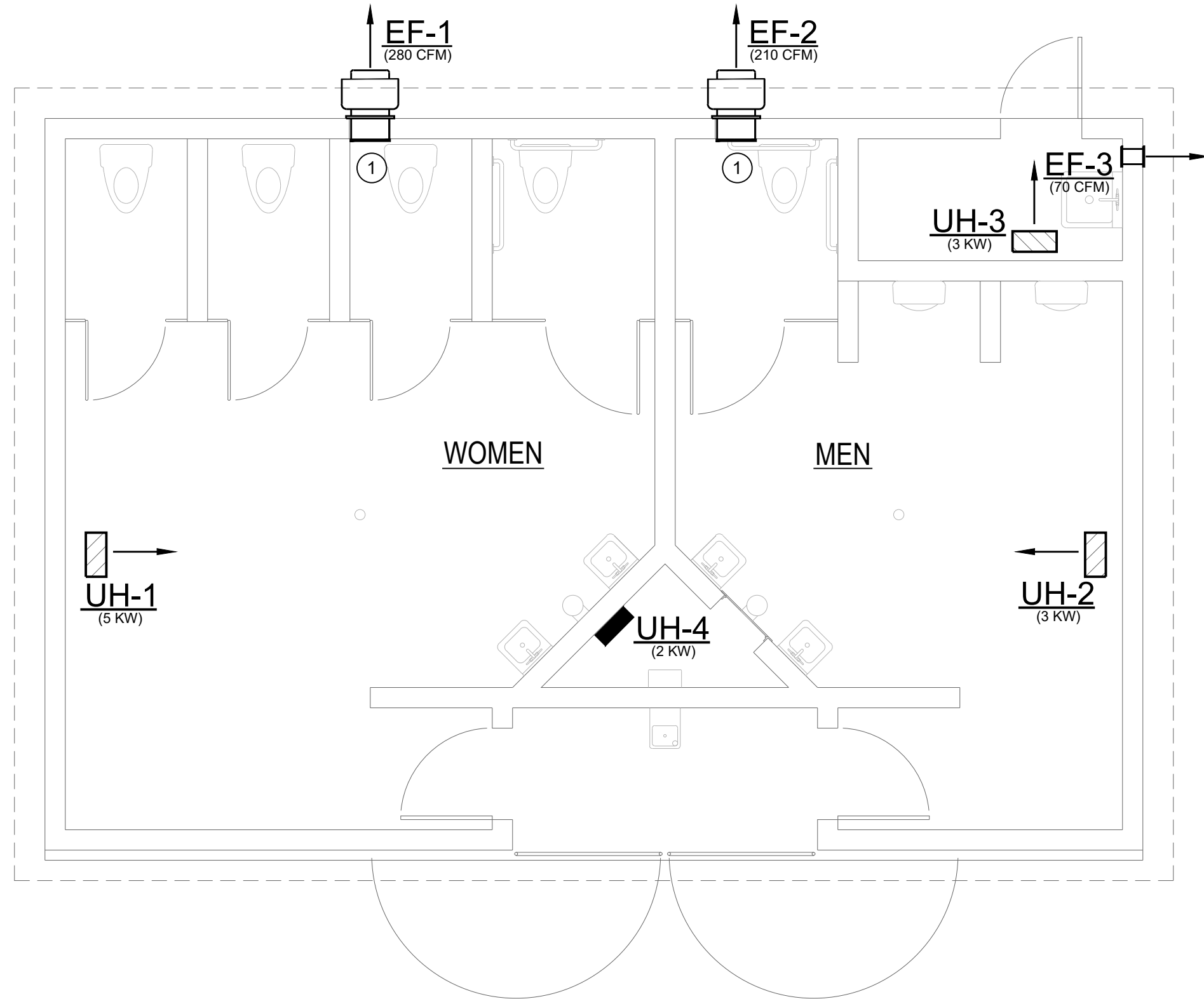
HVAC NOTES:

- PROVIDE LOUVERED GRILLE OVER EXHAUST OPENING. PRICE MODEL 630 12"x10" OR EQUAL..

UNIT HEATER SCHEDULE					
TAG		UH-1	UH-2	UH-3	UH-4
AREA SERVED		WOMEN	MEN	ELEC.	P. CLOSET
MANUFACTURER		QMARK	QMARK	QMARK	QMARK
UNIT MODEL		MUH-05	MUH-03	MUH-03	HT
APPROX. OPERATING WEIGHT	LBS.	30	30	30	---
APPROX. DIMENSIONS WxDxH	IN.	14x8x16	14x8x16	14x8x16	14x4x18
AIRFLOW	CFM	350	350	350	---
POWER SUPPLY	V/ø/Hz	240 / 1 / 60	240 / 1 / 60	240 / 1 / 60	240 / 1 / 60
HEATING INFORMATION					
PRIMARY HEATING TYPE		ELECTRIC	ELECTRIC	ELECTRIC	ELECTRIC
HEATING CAPACITY	kW	5	3	3	2
MOUNTING HEIGHT	FT.	HI AS POSSIBLE			---
APPROX. HEAT THROW @ MAX. HEIGHT	FT.	12			---
NOTES/ACCESSORIES		1,3-7	1,3-7	1,3-7	1-4
NOTES/ACCESSORIES					
1 INSTALL PER MFG.'S RECOMMENDATIONS					
2 PROGRAMMABLE					
3 LED TOUCH SCREEN					
4 STEEL SHEATHED HEATING ELEMENTS					
5 STEEL CABINET					
6 PROVIDE MOUNTING BRACKET					
7 UNIT-MOUNTED THERMOSTAT					


EXHAUST FAN SCHEDULE				
TAG		EF-1	EF-2	EF-3
AREA SERVED		WOMEN	MEN	ELEC.
MANUFACTURER		GREENHECK	GREENHECK	GREENHECK
MODEL		CUE-090	CUE-090	SP-L80
TYPE		SIDEWALL	SIDEWALL	SIDEWALL
APPROX. OPERATING WEIGHT	LBS.	45	45	15
OPENING SIZE	IN.	15 SQ.	15 SQ.	---
PERFORMANCE INFORMATION				
AIRFLOW	CFM	280	210	70
EXTERNAL STATIC PRESSURE	IN. W.G.	0.1	0.1	0.125
SONES		1.4	1.0	2.0
ELECTRICAL INFORMATION				
POWER SUPPLY	V/ø/Hz	115 / 1 / 60	115 / 1 / 60	115 / 1 / 60
FLA	A	1.5	1.5	---
MOTOR SIZE	HP / W	1/10 HP	1/10 HP	8W
MOTOR ENCLOSURE		ODP	ODP	ODP
NOTES / ACCESSORIES		1-4,6-8	1-4,6-8	1-3,5-8
NOTES / ACCESSORIES				
1 GRAVITY BACKDRAFT DAMPER				
2 WIRING PIGTAIL				
3 NEMA-1 TOGGLE DISCONNECT SWITCH				
4 VARI-GREEN MOTOR -OR- UNIT MOUNTED SPEED CONTROLLER IF REQ. FOR CFM				
5 DESIGNER GRILLE				
6 MOTORS MOUNTED ON VIBRATION ISOLATORS				
7 INTERLOCK EXHAUST FAN WITH LIGHT SWITCH. CONTRACTOR SHALL PROVIDE NECESSARY RELAYS, WIRING, ETC. TO TIE INTO LIGHT SWITCH.				
8 PROVIDE BIRDSCREEN OVER FAN DISCHARGE				

ROOM VENTILATION CALCULATIONS PER IMC 2015 - VENTILATION RATE PROCEDURE <sup>(1)</sup>										
ROOM	FLOOR AREA (SQ. FT.) <sup>(2)</sup>	AREA OUTDOOR AIRFLOW RATE (CFM/SQ. FT.)	FLOOR AREA OUTDOOR AIR (CFM)	# OF OCCUPANTS	PEOPLE OUTDOOR AIRFLOW RATE (CFM/ PERSON)	PEOPLE OUTDOOR AIR (CFM)	OUTDOOR AIR REQ. (CFM)	OUTDOOR AIR PROVIDED (CFM)	EXHAUST REQ. (CFM)	EXHAUST PROVIDED (CFM)
WOMEN	402	0	0	0	0	0	0	0	280	280
MEN	253	0	0	0	0	0	0	0	210	210
ELEC.	35	0	0	0	0	0	0	0	70	70
PLUMB. CLOSET	16	0	0	0	0	0	0	0	0	0
TOTAL PER VRP							0	0	560	560
(1) VENTILATION RATE PROCEDURE AS DESCRIBED IN ASHRAE 62.1-2013 6.2										
(2) AREA VALUES ARE FOR VENTILATION CALCULATIONS ONLY AND ARE NOT TO BE UTILIZED FOR OTHER PURPOSES										



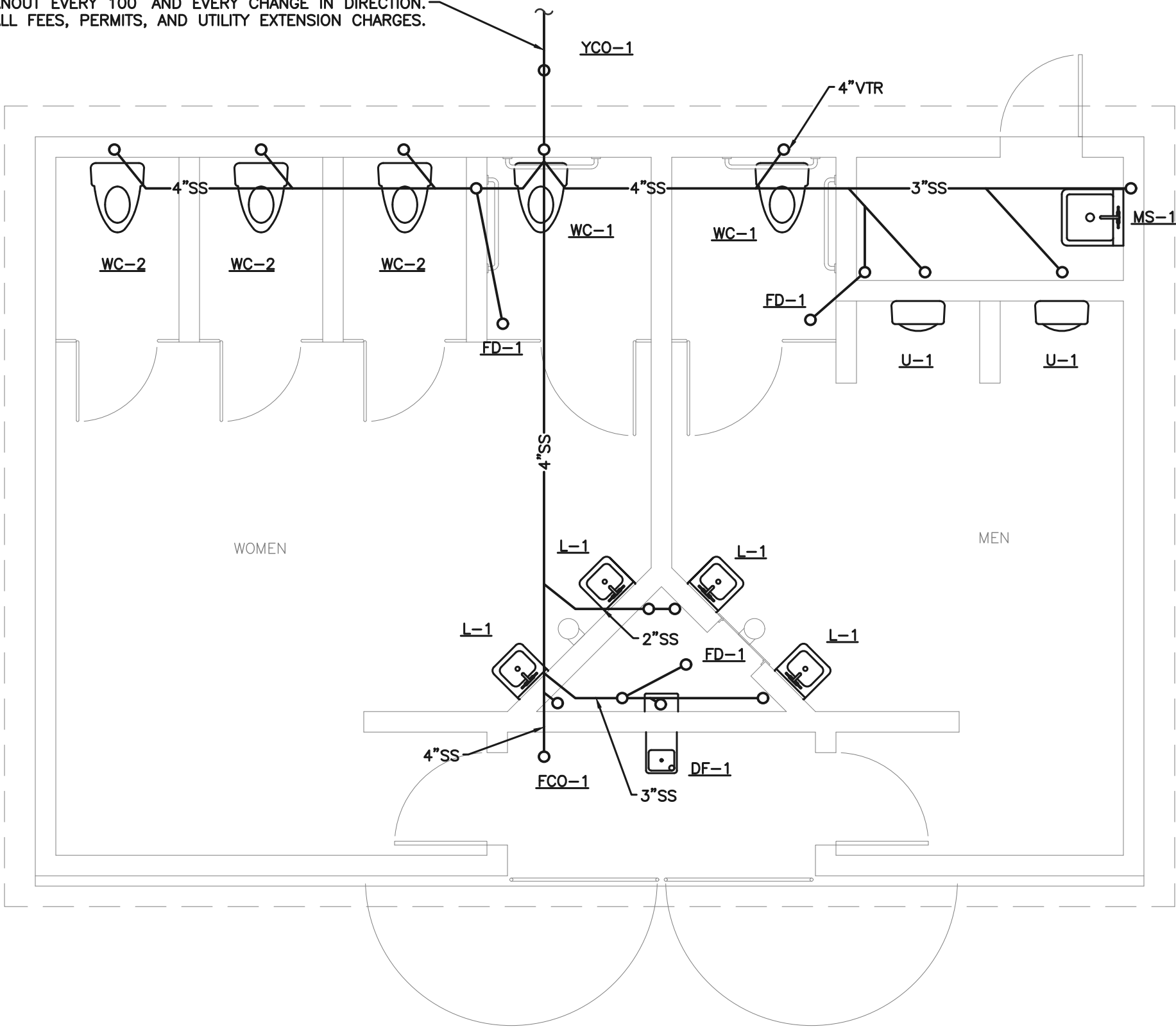
HVAC FLOOR PLAN

1/4" = 1'-0"

	HVAC PLAN									
	<b>WBW</b> Engineering, Inc. 3000 Canton Street, Hopkinsville, KY 42240 Phone: 270-886-2536 Fax: 270-885-7978 mail@wbwengr.com					TODD CO. SOCCER FIELD RESTROOM BUILDING & LIGHTING N MAIN ST., ELKTON, KY 42220				
CONSULTANT:	Drawn by: GC	Checked by: RG	Scale: 1/4" = 1'-0"	Date: 11-12-2024	Revised: ---	Sheet: <b>M100</b>				

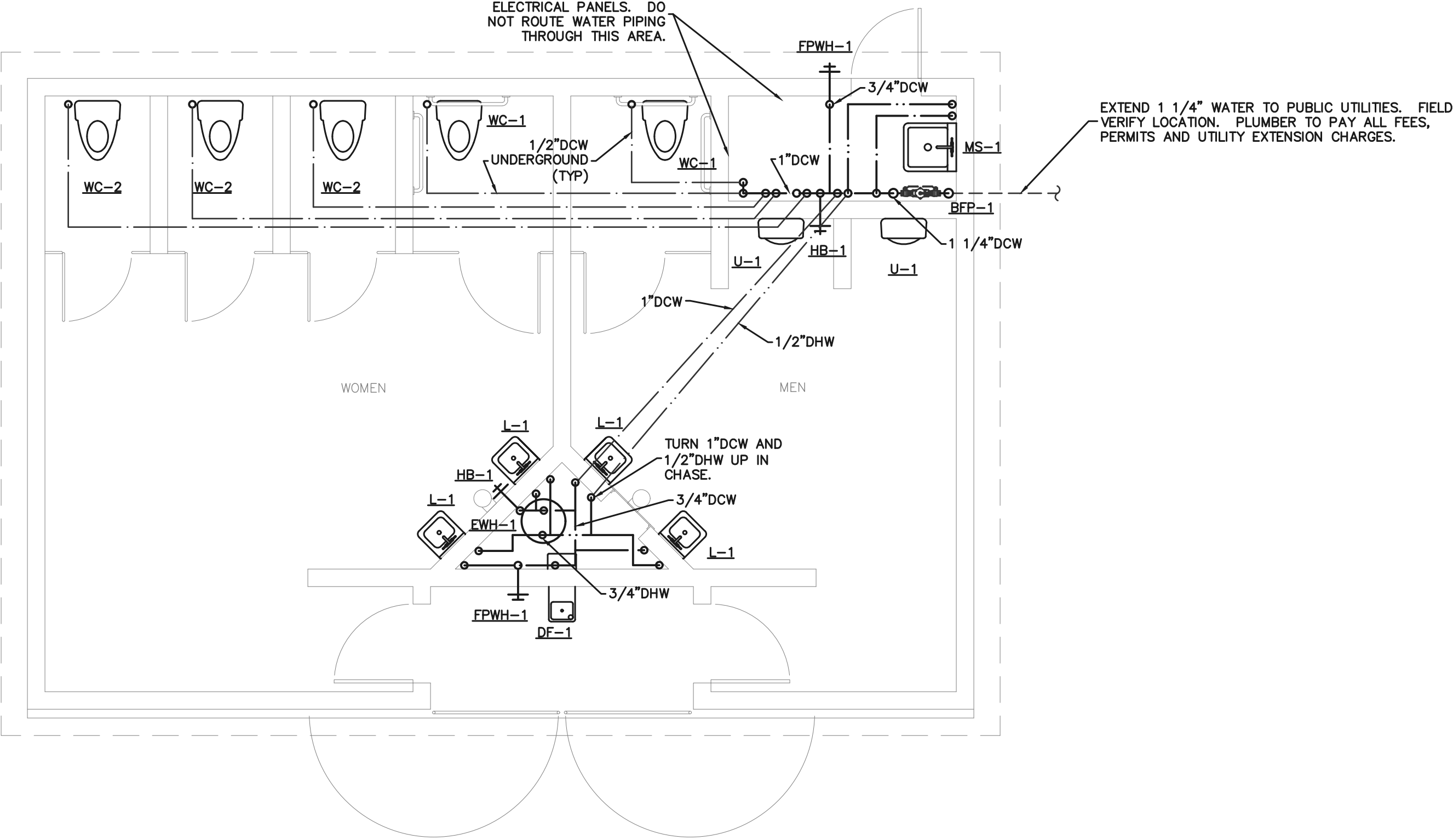


INSTALL 4"SS UNDER FOOTING IN SLEEVE. EXTEND 4"SS TO PUBLIC UTILITIES. FIELD  
VERIFY LOCATION. INSTALL CLEANOUT EVERY 100' AND EVERY CHANGE IN DIRECTION.  
PLUMBER TO PAY ALL FEES, PERMITS, AND UTILITY EXTENSION CHARGES.



**SEWER PLAN**  
SCALE: 1/4" = 1'-0"

THIS AREA RESERVED FOR  
ELECTRICAL PANELS. DO  
NOT ROUTE WATER PIPING  
THROUGH THIS AREA.



**WATER PLAN**  
SCALE: 1/4" = 1'-0"

GENERAL NOTES:

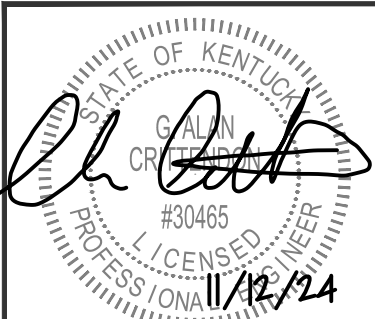
1. ALL WATER CLOSETS SHALL RECEIVE A 2" VENT, ALL OTHERS SHALL RECEIVE 1 1/2" VENT UNLESS OTHERWISE NOTED. COORDINATE VENT THROUGH ROOF (VTR) LOCATIONS WITH ROOFTOP EQUIPMENT AND FRESH AIR INTAKES. MAINTAIN 10' MINIMUM CLEARANCE FROM FRESH AIR INTAKES.
2. ALL WATER CLOSETS SHALL RECEIVE A 4"SS CONNECTION, ALL FLOOR DRAINS SHALL RECEIVE A 3"SS CONNECTION, ALL OTHERS SHALL BE 2"SS UNLESS OTHERWISE NOTED.
3. ALL WATER CLOSETS SHALL RECEIVE 1"DCW, ALL FPWH AND URINALS SHALL RECEIVE 3/4"DCW, ALL OTHER FIXTURES SHALL RECEIVE 1/2" UNLESS OTHERWISE SPECIFIED.
4. WATER LINES SHALL NOT BE INSTALLED IN AREAS SUBJECT TO FREEZING.

**LEGEND**

—SS—	SANITARY SEWER
---V---	VENT, VTR(VENT THRU ROOF)
---DCW---	DOMESTIC COLD WATER
---DHW---	DOMESTIC HOT WATER



DWCEI PROJECT NO. 24-148



**PLUMBING PLANS**

**WBW** Engineering, Inc.  
3000 Canton Street, Hopkinsville, KY 42240  
Phone: 270-886-2536 Fax: 270-885-7978 mail@wbwengr.com

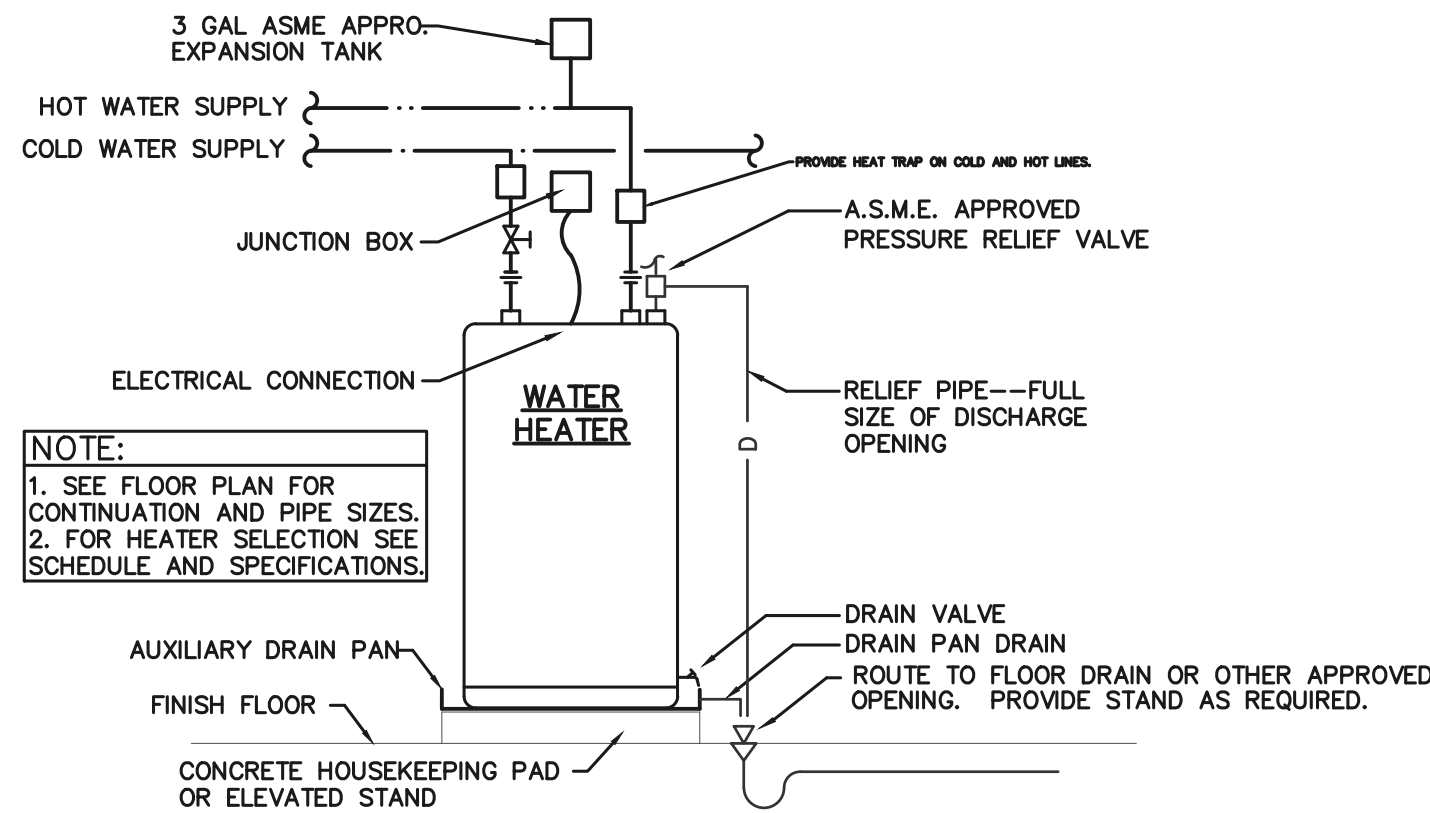
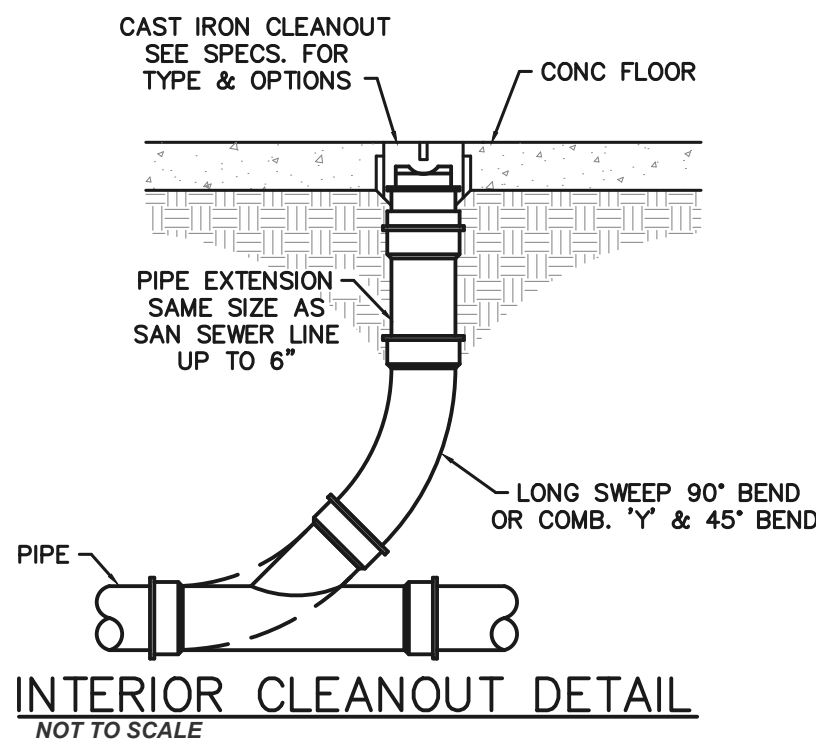
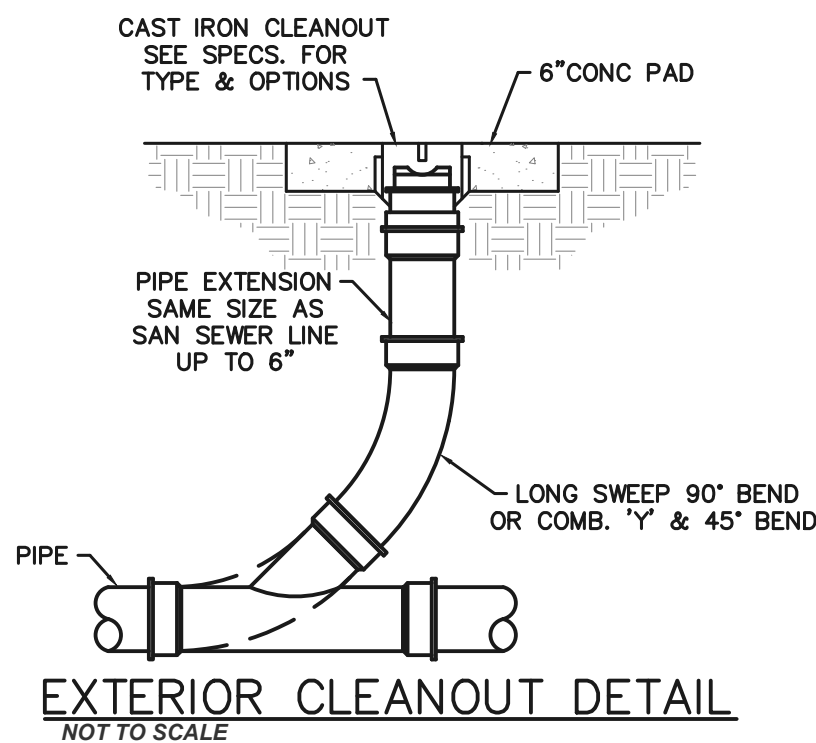
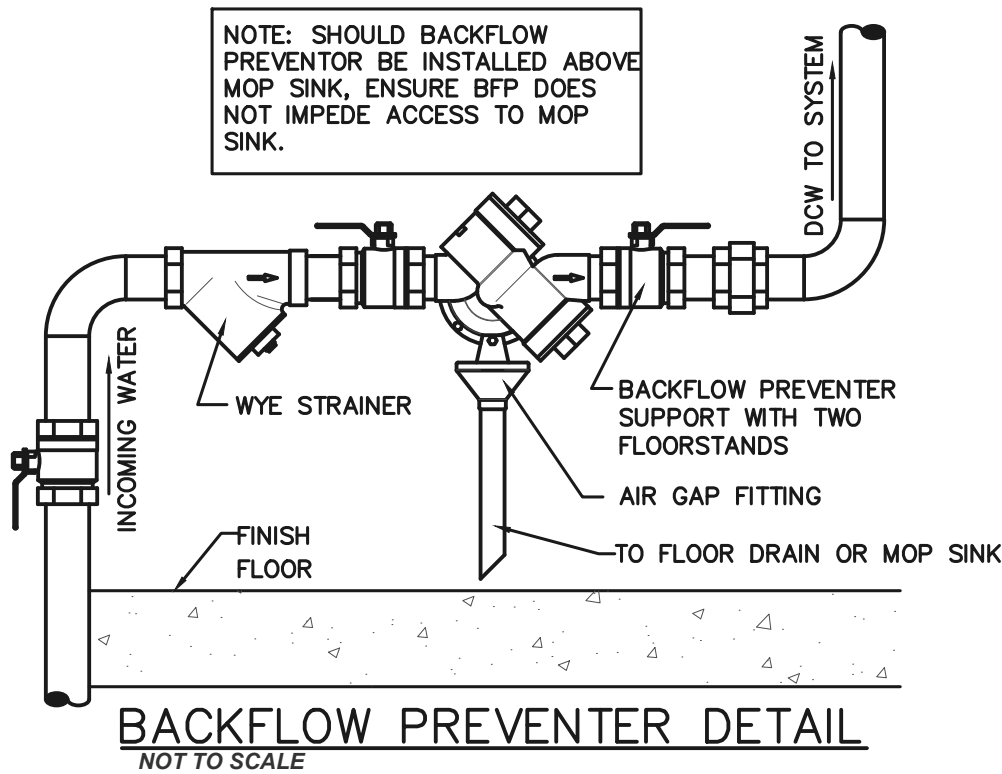
TODD CO. SOCCER FIELD  
RESTROOM BUILDING & LIGHTING  
N MAIN ST., ELKTON, KY 42220

CONSULTANT:	Drawn by: GAC	Checked by: GAC	Scale: AS SHOWN	Date: 11-12-2024	Revised: -	Sheet: <b>P100</b>
-------------	------------------	--------------------	--------------------	---------------------	---------------	-----------------------



GENERAL PLUMBING NOTES:

1. ALL WORK SHALL BE EXECUTED AND INSPECTED IN ACCORDANCE WITH ALL LOCAL OR STATE CODES, LAWS, ORDINANCES, RULES AND REGULATIONS APPLICABLE TO THE PARTICULAR CLASS OF WORK. IF, TO THE KNOWLEDGE OF THE CONTRACTOR, THE DRAWINGS AND SPECIFICATIONS ARE IN CONFLICT WITH THE ABOVE, HE SHALL PROMPTLY NOTIFY THE ENGINEER IN WRITING SO THAT ANY NECESSARY CHANGES CAN BE PROVIDED FOR IN HIS CONTRACT. IF THE CONTRACTOR PERFORMS ANY WORK WITHOUT NOTICE AS REQUIRED, HE SHALL BEAR ALL COSTS OF CORRECTIVE ACTION.
2. THE CONTRACTOR SHALL INCLUDE IN HIS QUOTATION ALL APPLICABLE SERVICE CHARGES, FEES, PERMITS, ROYALTIES, AND OTHER SIMILAR COSTS IN CONNECTION WITH THE WORK. OBTAIN PERMITS, AND REQUEST INSPECTIONS FROM AUTHORITY HAVING JURISDICTION.
3. INSTALL WORK IN LOCATIONS SHOWN ON DRAWINGS, UNLESS PREVENTED BY PROJECT CONDITIONS. FOR PURPOSES OF CLEARNESS AND LEGIBILITY, DRAWINGS ARE ESSENTIALLY DIAGRAMMATIC, AND ALTHOUGH SIZE AND LOCATION OF EQUIPMENT ARE DRAWN TO SCALE WHENEVER POSSIBLE, THE CONTRACTOR SHALL MAKE USE OF ALL DATA IN ALL OF THE CONTRACT DOCUMENTS AND SHALL VERIFY THIS INFORMATION AT THE SITE. VERIFY ALL EXISTING CONDITIONS PRIOR TO CONSTRUCTION. EXISTING LOCAT, IF SHOWN, DETERMINED FROM SITE OBSERVATIONS AND AS BUILT DRAWINGS. CONTRACTOR SHALL NOTIFY ENGINEER SHOULD EXISTING CONDITIONS DIFFER FROM THESE DRAWINGS.
4. THE DRAWINGS INDICATE REQUIRED SIZE AND POINTS OF TERMINATION OF PIPES AND DUCTS, AND SUGGEST PROPER ROUTES OF PIPE TO CONFORM TO STRUCTURE, AVOID OBSTRUCTIONS AND PRESERVE CLEARANCES FROM ELECTRICAL PANELS. PLUMBING LINES SHALL NOT BE RUN DIRECTLY OVER ELECTRICAL PANELS. HOWEVER, IT IS NOT INTENDED THAT DRAWINGS INDICATE ALL NECESSARY OFFSETS, AND IT SHALL BE THE WORK OF THIS SECTION TO INSTALL PIPING AND DUCTS IN SUCH A MANNER AS TO CONFORM TO STRUCTURE, AVOID ALL OBSTRUCTIONS, PRESERVE HEADROOM AND KEEP OPENINGS AND PASSAGEWAYS CLEAR WITHOUT FURTHER INSTRUCTION OR COST TO THE OWNER.
5. CONTRACTOR SHALL GUARANTEE ALL WORK PERFORMED UNDER THIS CONTRACT TO BE FREE FROM DEFECTS IN MATERIALS AND WORKMANSHIP FOR A PERIOD OF ONE YEAR FROM DATE OF CERTIFICATE OF SUBSTANTIAL COMPLETION.
6. THE PLUMBING CONTRACTOR SHALL PREPARE SUBMITTALS ON ALL EQUIPMENT AND MATERIALS APPLICABLE TO THIS PROJECT AND SUBMIT TO ENGINEER FOR REVIEW PRIOR TO PROCUREMENT, FABRICATION OR ANY CONSTRUCTION. SUBMITTALS MAY BE MAILED VIA APPROPRIATE CHANNELS OR SUBMITTED IN PDF FORM VIA EMAIL. PARTIAL SUBMITTALS WILL NOT BE REVIEWED. SUBMITTALS SHALL BE PROJECT SPECIFIC INDICATING THE INTENDED MODEL NUMBERS, MATERIALS, AND EQUIPMENT TAGS.
7. SHOULD A PRODUCT SUBSTITUTION BE PROVIDED:
- a. THE PROPOSED SUBSTITUTION SHALL BE FULLY INVESTIGATED AND DETERMINED TO BE EQUAL OR SUPERIOR IN ALL RESPECTS TO THE SPECIFIED PRODUCT.
- b. THE PROPOSED SUBSTITUTION SHALL HAVE THE SAME WARRANTY FURNISHED FOR THE PROPOSED SUBSTITUTION AS FOR THE SPECIFIED PRODUCT.
- c. THE PROPOSED SUBSTITUTION SHALL HAVE THE SAME MAINTENANCE SERVICE AND AVAILABILITY OF SPARE PARTS.
- d. THE PROPOSED SUBSTITUTION SHALL NOT AFFECT DIMENSIONS AND/OR FUNCTIONAL REQUIRED CLEARANCES PER THE MANUFACTURER OR THE LATEST APPLICABLE CODES.
- e. THE PROPOSED SUBSTITUTION SHALL HAVE NO ADVERSE EFFECT ON OTHER TRADES AND SHALL NOT AFFECT AND/OR DELAY THE PROGRESS SCHEDULE.
- f. THE CONTRACTOR SHALL BE RESPONSIBLE TO PAY FOR ANY CHANGES TO BUILDING DESIGN, INCLUDING ARCHITECTURAL/ENGINEERING DESIGN, DETAILING AND CONSTRUCTION COST CAUSED BY THE SUBSTITUTION AND TAKE SOLE RESPONSIBILITY FOR SUBSTITUTIONS THAT ARE DEEMED "VALUE ENGINEERING" AND DETERMINED NOT EQUAL OR SUPERIOR TO THE PRODUCT SPECIFIED.
8. TRANSPORT AND HANDLE PRODUCTS IN ACCORDANCE WITH MANUFACTURER'S INSTRUCTIONS.
9. STORE AND PROTECT PRODUCTS IN ACCORDANCE WITH MANUFACTURER'S INSTRUCTIONS, WITH SEALS AND LABELS INTACT AND LEGIBLE.
10. ALL WATER HEATERS, PUMPS, ETC. SHALL HAVE A LISTING OR EQUIVALENT. VERIFY THAT EACH PIECE OF EQUIPMENT OR SYSTEM HAS BEEN CHECKED FOR PROPER LUBRICATION, DRIVE ROTATION, BELT TENSION, CONTROL SEQUENCE, OR FOR OTHER CONDITIONS WHICH MAY CAUSE DAMAGE.
11. DEMONSTRATE OPERATION AND MAINTENANCE OF PRODUCTS TO OWNER'S PERSONNEL ONE WEEK PRIOR TO DATE OF FINAL INSPECTION.
12. EXECUTE FINAL CLEANING PRIOR TO FINAL PROJECT ASSESSMENT.
13. SEISMICALLY RESTRAIN SUSPENDED PLUMBING EQUIPMENT, GAS PIPING AND HYDRONIC PIPING AS REQUIRED BY LOCAL CODE. PROVIDE SUPPORT AND EQUIPMENT REQUIRED TO CONTROL EXPANSION AND CONTRACTION OF PIPING. PROVIDE LOOPS, PIPE OFFSETS, AND SWING JOINTS, OR EXPANSION JOINTS WHERE REQUIRED.
14. SANITARY DRAIN/VENT PIPING LOCATED IN RETURN PLENUM SHALL BE SERVICE WEIGHT CAST IRON (ASTM A74). GRAVITY SANITARY DRAIN/VENT PIPING MAY BE SCHEDULE 40 PVC (ASTM 2665) OR SERVICE WEIGHT CAST IRON (ASTM A74). CONFORM TO LOCAL CODE REQUIREMENTS. FORCED MAIN PIPING SHALL BE SCH 80 PVC.
15. DOMESTIC WATER PIPING ON PUBLIC WATER SYSTEMS SHALL BE TYPE "L" COPPER (ASTM B88) WITH SOLDER CONNECTIONS OR CROSSLINKED POLYETHYLENE (PEX) PIPING (ASTM 876/877). UNDERGROUND WATER PIPING SHALL BE TYPE "K" COPPER, CROSSLINKED POLYETHYLENE (PEX) PIPING (ASTM 876/877) OR SCHEDULE 40 PVC (ASTM D1785), AS LOCAL CODES ALLOW. ANY PIPING ON A DOMESTIC WELL SHALL BE SCH 40 PVC/CPVC OR TYPE "A" PEX. INSULATE DOMESTIC WATER LINES WITH 1/2" THICK FIBERGLASS. HOT WATER LINES AND ALL RECIRCULATING LOOPS UP TO 1 1/2" SHALL BE INSULATED WITH 1" THICK FIBERGLASS INSULATION. HOT WATER LINES 2" AND LARGER SHALL HAVE 2" THICK FIBERGLASS INSULATION.
16. BEFORE COMMENCING WORK ON SANITARY SEWER, CHECK INVERTS AND ENSURE THAT THESE CAN BE PROPERLY CONNECTED WITH SLOPE FOR DRAINAGE AND COVER TO AVOID FREEZING.
17. PROVIDE NEW WATER SERVICE COMPLETE WITH REDUCED PRESSURE BACKFLOW PREVENTER. WHERE WATER PRESSURES EXCEED 80PSI, PROVIDE PRESSURE REDUCING VALVE (PRV) AND STRAINER (WITH AN ISOLATION VALVE UPSTREAM OF THE PRV AND DOWNSTREAM OF THE STRAINER) INSTALLED UPSTREAM OF BACKFLOW PREVENTER ON THE INCOMING WATER SERVICE LINE AS IT ENTERS THE BUILDING.
18. PROVIDE NON-CONDUCTING DIELECTRIC CONNECTIONS WHEREVER JOINING DISSIMILAR METALS.
19. PROVIDE ACCESSIBLE STOPS IN PIPING CONNECTIONS TO ALL PLUMBING FIXTURES.
20. ASSURE EXTERIOR WALL CHASES ARE INSULATED TO PREVENT FREEZING. WATER LINES SHALL NOT BE INSTALLED IN AREAS SUBJECT TO FREEZING TEMPERATURES.
21. VERIFY ALL WORK DIMENSIONS WITH ARCHITECTURAL DRAWINGS PRIOR TO ORDERING SINKS AND LAVATORIES. PROVIDE INSULATING ADA PLUMBING JACKETS UNDER EACH ADA FIXTURE WITH EXPOSED DRAIN AND WATER PIPING.
22. PROVIDE PIPE LABELS FOR ALL PIPING SYSTEMS.
23. PROVIDE TRAP PRIMERS FOR ALL FLOOR DRAINS AND ENSURE THAT FLOOR SLOPES TO DRAIN AT FLOOR DRAIN.
24. PROVIDE AND INSTALL WADE SHOCKSTOPS FOR DOMESTIC WATER PIPING SYSTEM. TWO REQUIRED PER BATHROOM UNIT. ONE DCW AND ONE DHW. PROVIDE SHUTOFF VALVE FOR SERVICING SHOCKSTOP.
25. VERIFY FLOOR PLAN AND WALL/FLOOR/CEILING RATINGS WITH ARCHITECTURAL PLANS. PROVIDE RATED PENETRATIONS AT EACH INSTANCE WHERE PLUMBING INSTALLATION PENETRATES A RATED ASSEMBLY. PENETRATIONS SHALL BE PER DETAILS ON THE DRAWINGS OR SOME OTHER U.L. LISTED DESIGN.
26. THIS CONTRACTOR SHALL EXAMINE THE ENTIRE DRAWING PACKAGE AND INCLUDE ALL NECESSARY MATERIAL AND LABOR TO PROVIDE A COMPLETE AND OPERABLE SYSTEM AS INDICATED IN THE ENTIRE DRAWING SET FOR HIS RESPECTIVE SYSTEMS.
27. THE PLUMBER SHALL PROVIDE A COMPLETE AND OPERABLE PLUMBING SYSTEM INCLUDING BUT NOT LIMITED TO ALL FIXTURES, BUILDING WATER PIPING AND INSULATION, SITE WATER PIPING, BUILDING WASTE AND VENT PIPING, SITE SEWER, PUBLIC SYSTEM TAP FEES, EXTENSION CHARGES, CLEANING OF WATER SYSTEM, IDENTIFICATION OF ALL PIPING, ETC.
28. THE DRAINAGE SYSTEM(S) AND THE VENT SYSTEM(S) SHALL BE TESTED, IN ITS ENTIRETY, FOR 15 MINUTES, WITH A 10 FOOT HEAD OF WATER. THE SYSTEM SHALL PROVE TIGHT AT ALL POINTS. TESTING SHALL BE THUS OR AS PER OTHER METHOD APPROVED BY THE ENGINEER OR LOCAL INSPECTOR. TEST SHALL OCCUR BEFORE ANY BACKFILLING ON UNDERGROUND PORTIONS.
29. THE WATER SUPPLY SYSTEM SHALL BE TESTED, IN ITS ENTIRETY, BY FILLING WITH WATER AND PRESSURING TO OPERATING PRESSURE. SYSTEMS OTHER THAN PLASTIC MAY BE PNEUMATICALLY TESTED AT 50 PSI FOR 15 MINUTES IN LIEU OF WATER TEST. ALL TESTS SHALL PROVE THE SYSTEM TIGHT.
30. ANY PIPING INSTALLED BELOW PARKING AREAS, ROADWAYS, CONCRETE SLABS, DRIVEWAYS OR ANY HEAVY TRAFFIC AREAS SHALL BE BEDDED AND BACKFILLED WITH #57 LIMESTONE.

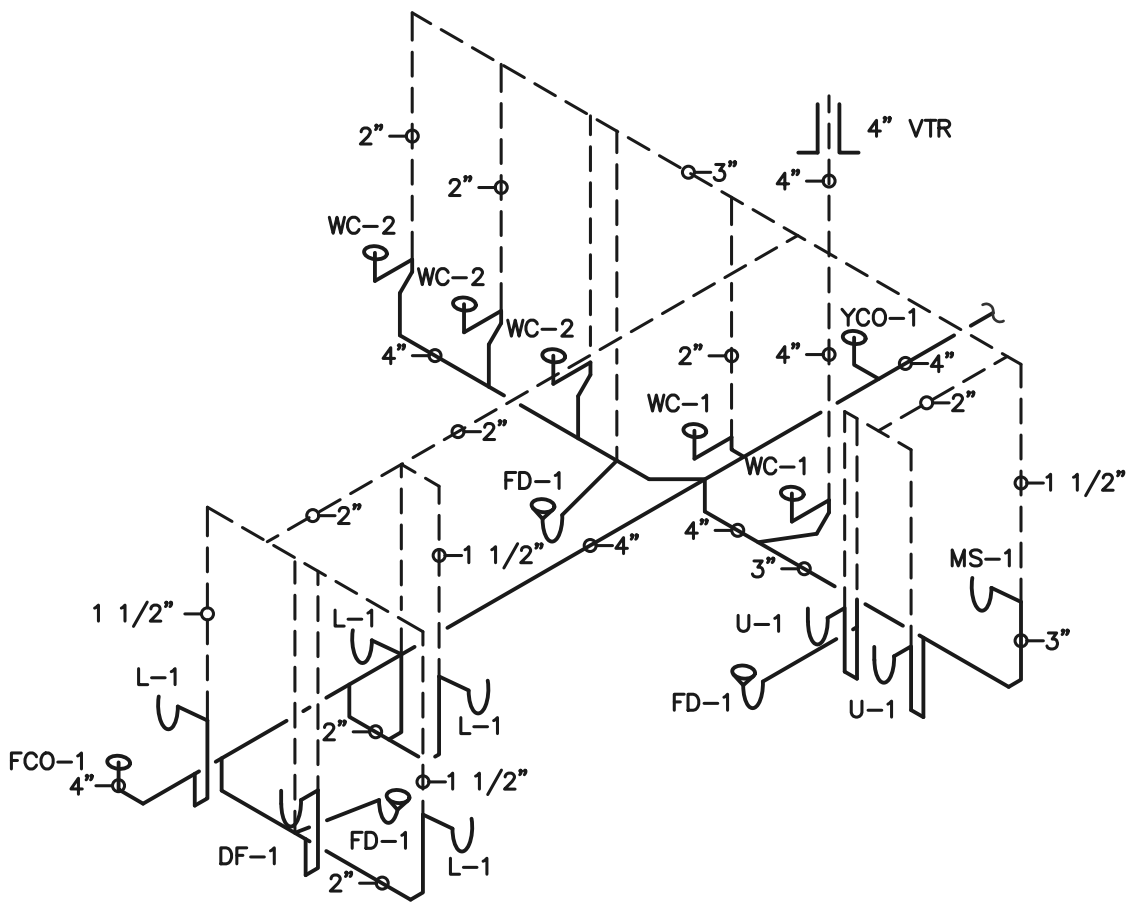


PLUMBING SCHEDULE:

TAG	RUN OUT SIZE				DESCRIPTION
	SEWER	DCW	DHW		
WC-1	4"	1/2"	---		AMERICAN STANDARD, CADET PRO, 215FC004.020, 17" TO 19" SEAT HEIGHT ADA, ELONGATED BOWL AND TANK COVER LOCKING DEVICE, 1.6 GPF, WITH CHURCH, 295C, SEAT, AND SUPPLY & STOP.
WC-2	4"	1/2"	---		AMERICAN STANDARD, CADET PRO, 215CA004.020, 15" ELONGATED BOWL AND TANK COVER LOCKING DEVICE, 1.6 GPF, WITH CHURCH, 295C, SEAT, AND SUPPLY & STOP.
U-1	1 1/2"	3/4"	---		AMERICAN STANDARD, WASHBROOK, 6590001, URINAL, ADA, WITH SLOAN, REGAL, 186-1, FLUSH VALVE AND WALL CARRIER. COORDINATE HEIGHT WITH ARCHITECTURAL DWGS.
L-1	1 1/2"	1/2"	1/2"		AMERICAN STANDARD, 0958008EC, WALL-HUNG LAVATORY, ADA, WITH AMERICAN STANDARD, 1340225.002 METERING FAUCET WITH 1GPM AERATOR. PROVIDE MIXING VALVE WITH 110°F MAX DELIVERY. BRASS CRAFT, DEARBORN, #507, P-TRAP, 155A, STRAINER, AND #2165 SUPPLIES & STOPS. PROVIDE ZURN Z1231 WALL CARRIER WITH CONCEALED SUPPORT ARMS. PROVIDE WITH PORCELAIN SHROUD.
MS-1	3"	1/2"	1/2"		FIAT, MSBID2424, 24x24 MOP SINK. FIAT, 830-AA, FAUCET WITH FIAT, A32-AA, HOSE AND BRACKET. PROVIDE STAINLESS BACKSPLASH.
YCO-1	4"	---	---		ZURN, EXTERIOR GRADE CLEANOUT.
FPWH-1	---	3/4"	---		ZURN Z-1310 FROSTPROOF WALL HYDRANT.
FD-1	3"	---	---		J.R. SMITH, MODEL 2005-1, FLOOR DRAIN. PROVIDE WITH TRAP PRIMER.
BFP-1	---	1"	---		WATTS, SERIES LP919, REDUCED PRESSURE BACKFLOW PREVENTOR ASSEMBLY WITH STRAINER AND AIR GAP.
HB-1	---	3/4"	---		ZURN 1310 HOSE BIBB.
DF-1	1 1/2"	1/2"	---		ELKAY, EDFPBM177PK, HI-LO, NON-REFRIGERATED FROST PROOF DRINKING FOUNTAIN. ADA. LKFRB1 FREEZE RESISTANT BOX, MP20 SURFACE MOUNTING PLATE, STAINLESS STEEL FINISH.
FCO-1	4"	---	---		ZURN, Z-1400, ADJUSTABLE, FLOOR CLEAN-OUT.

ELECTRIC WATER HEATER SCHEDULE:

TAG	EW-1	
LOCATION	CLOSET	
QUANTITY	1	
MANUFACTURER	STATE	
MODEL NUMBER	ES6 30 DORT	
TYPE	ELECTRIC	
STORAGE (GAL)	30	
ELEMENTS	4500W	
ELECTRICAL	240/1/60	
NOTES	ALL	
1. MINIMUM WATER TEMPERATURE 125°F		
2. AUXILIARY DRAIN PAN.		



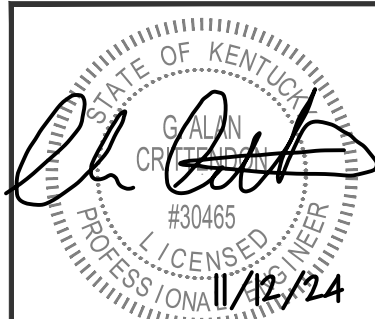
SANITARY SEWER ISOMETRIC

NOT TO SCALE

PLUMBING DETAILS

**WBW**Engineering, Inc.  
3000 Canton Street, Hopkinsville, KY 42240  
Phone: 270-886-2536 Fax: 270-885-7978 mail@wbwengr.com

TODD CO. SOCCER FIELD  
RESTROOM BUILDING & LIGHTING  
N MAIN ST., ELKTON, KY 42220



DWCEI PROJECT NO. 24-148

CONSULTANT:

Drawn by:  
GAC

Checked by:  
GAC

Scale:  
AS SHOWN

Date:  
11-12-2024

Revised:  
-

Sheet:

P200